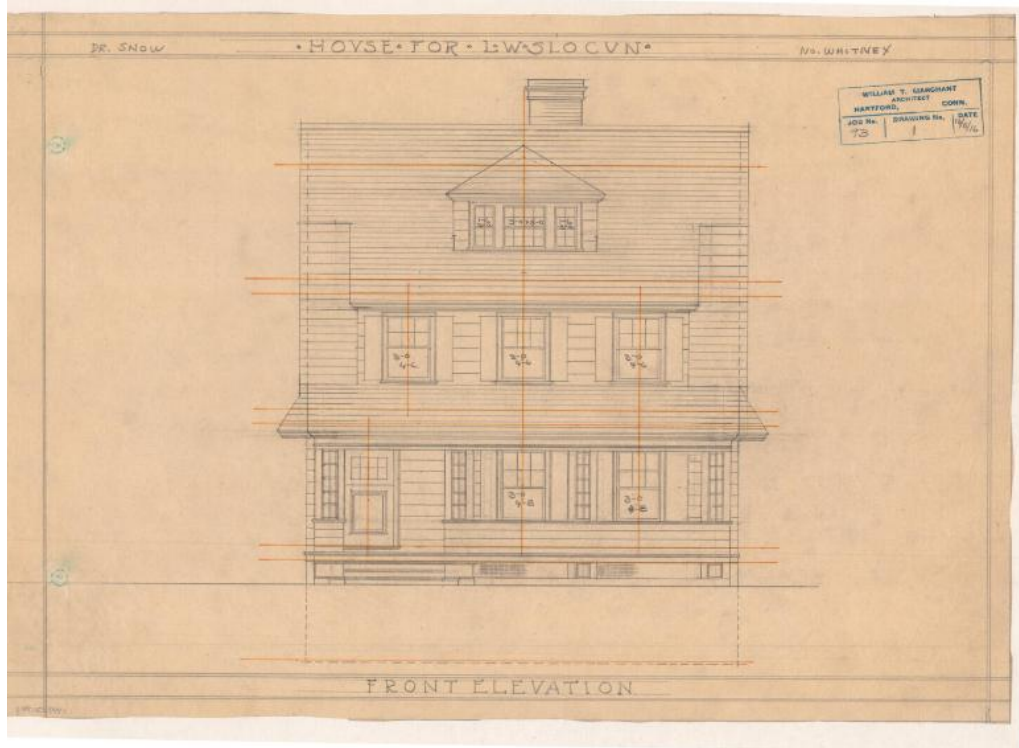


Basic Detail Report



Title House for L.W. Slocum, 196 Whitney Street, Hartford

Date 1916

Primary Maker William T. Marchant

Medium Drawings; pencil on tracing paper, with orange lines

Description Plans for a two and a half story house with clapboard siding. The house has a gambrel roof and a dormer with grouped windows and a front porch with trellis work. The drawings include front, side, and rear elevations. The cellar has a laundry, stairwell, cold room and coal room. The first floor has a veranda, stairwell, living room, dining room, kitchen, hall, porch, butler's pantry, and closets. The second floor has a veranda, closets, den, hall, bath, balcony, linen, stairwell, and three chambers (bedrooms). The attic has storage, hall, bath, closets, one stairwell, storage, and two chambers (bedrooms).

Basic Detail Report

Dimensions Primary Dimensions (height x width): 12 1/4 x 17 5/8in. (31.1 x 44.8

cm)