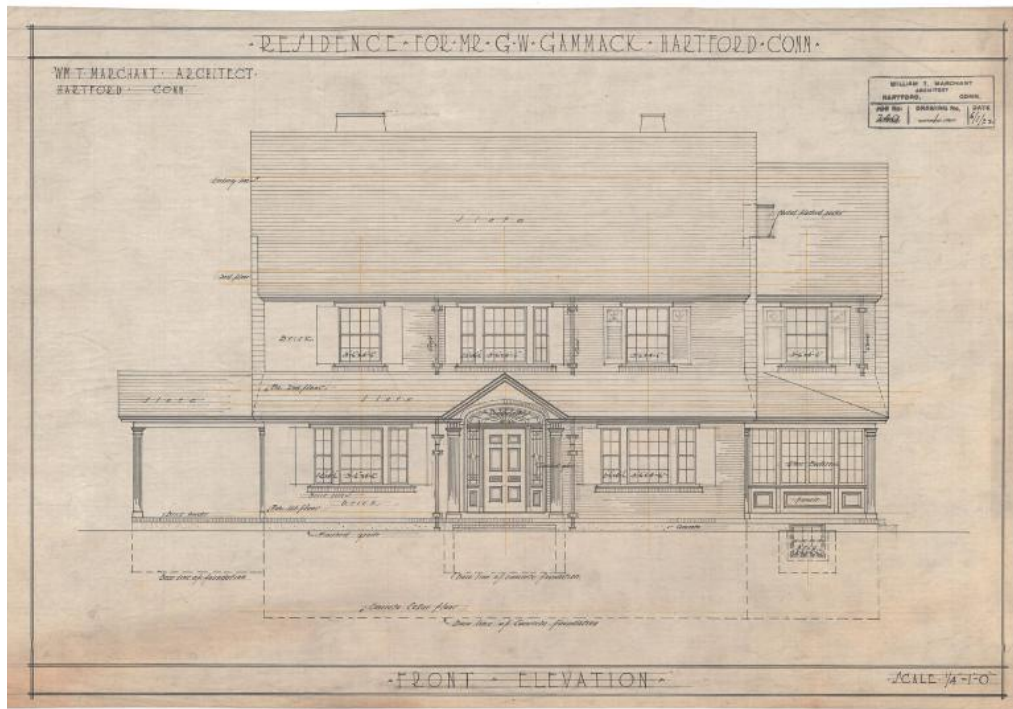


Basic Detail Report



Title House for G. W. Gammack, 35 Walbridge Road, West Hartford

Date 1922

Primary Maker William T. Marchant

Medium Architectural drawings; ink and pencil on paper

Description Plans for a brick Colonial Revival residence with slate gambrel roof include front, rear, and side elevations, as well as floor plans for the basement, first floor, second floor, and attic. The basement floor plan shows a bathroom, coal rooms, and laundry room. First floor plans include a piazza, living room, hall, dining room, kitchen, butler's pantry, pantry, sun porch, closets, and a bathroom. The second floor has three chambers (bedrooms), a den, closets, and two pathrooms. Rooms allowed for in the attic are two chambers, a bathroom, and storage space. The set also includes details.

Dimensions Primary Dimensions (height x width): 14 x 21in. (35.6 x 53.3cm)