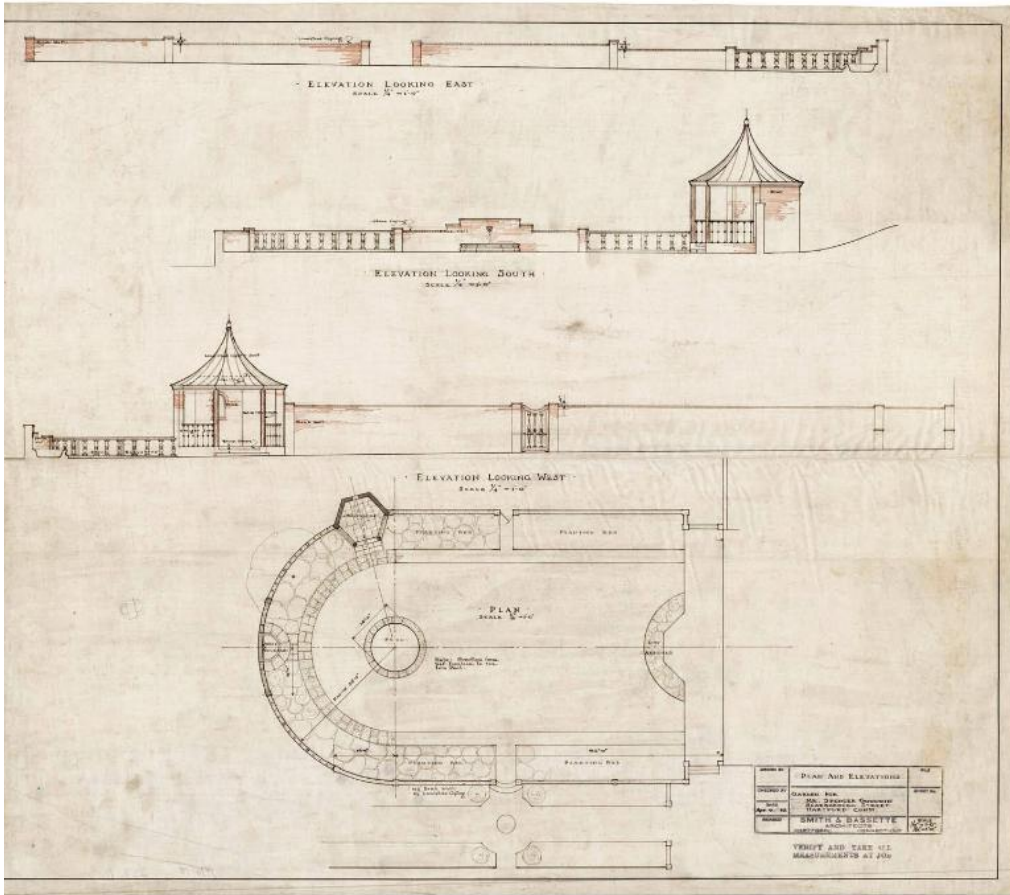


Basic Detail Report



Title Garden Plan for F. Spencer Goodwin, 170 Scarborough Street, Hartford

Date 1932

Primary Maker Smith & Bassette

Medium Architectural drawings; black and red ink and pencil on paper

Description Plans for a garden include east, south, and west elevations from interior garden viewpoint, as well as a plan of the garden and specifications for a garden bench. 1976.18.237.1: The garden is oblong in shape, curving outward on south end and straight on the north end (similar to a cut-off oval). Walls are made of brick with limestone and stone coping, intermittantly spaced with stone balusters. Planting beds rim the garden's interior wall, and flagstones

Basic Detail Report

provide trim on the interior side of the planting beds. The west wall contains a balustered wood swing gate at center, and near the south wall a hexagonal belvedere is positioned. The belvedere has a lead clad copper roof which curves inward and up to create an upside-down curved v shape. It's exterior walls are brick but the interior is faced with wrought iron fencing and the doorway posts are solid hewn oak. The garden's interior south wall has a fountain with a lion's head spout and there is a circular pool twelve feet away into which overflow from the fountain will flow. 1976.18.237.2: Large scale detail of a cypress garden bench.

Dimensions Primary Dimensions (height x width): 32 1/2 x 35 3/4 in. (82.6 x 90.8 cm) and smaller