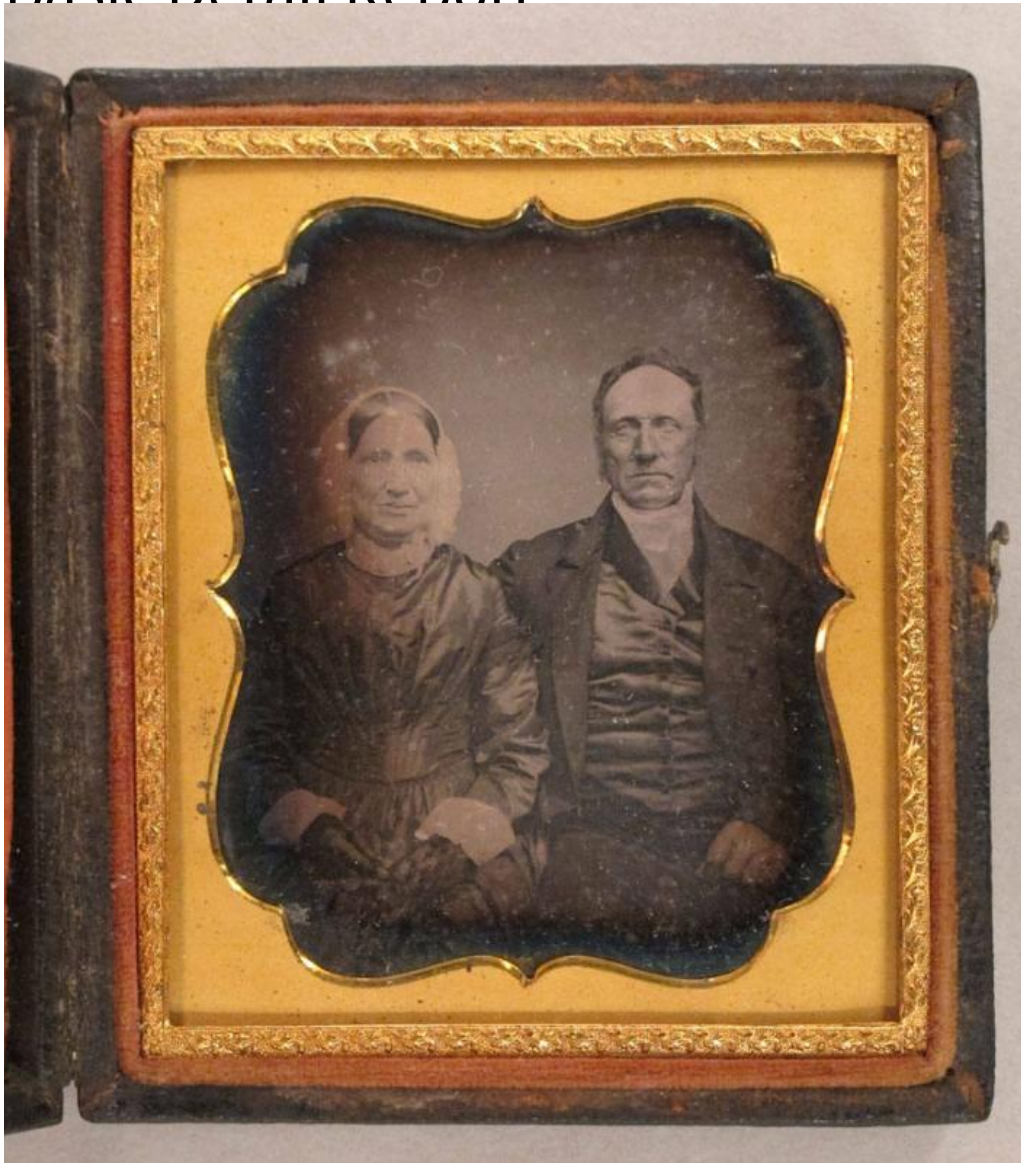


Basic Detail Report



Title Roger Welles and Electa Stanley Welles

Date 1852

Primary Maker Unknown

Medium Photography; daguerreotype on silver-coated copperplate in brass nonpareil mat with glass coversheet in embossed leather and wood case with silk pad and metal clasps

Description Half-length double studio portrait of a middle-aged man and woman seated side by side. She wears a cap, dress, and gloves; he wears a coat,

Basic Detail Report

vest, a high stock, and eyeglasses. An identifying label reads: "Taken in 1852 /

according to / Cousin Julia Barber, / January 1898 / E.S. Welles / Roger Welles &

Electa Stanley, his wife"

Dimensions Primary Dimensions (image height x width): 2 5/8 x 2 1/4in. (6.7 x 5.7

cm) Other (case height x width x depth): 3 3/4 x 3 1/8 x 5/8in. (9.5 x 7.9 x 1.6cm)