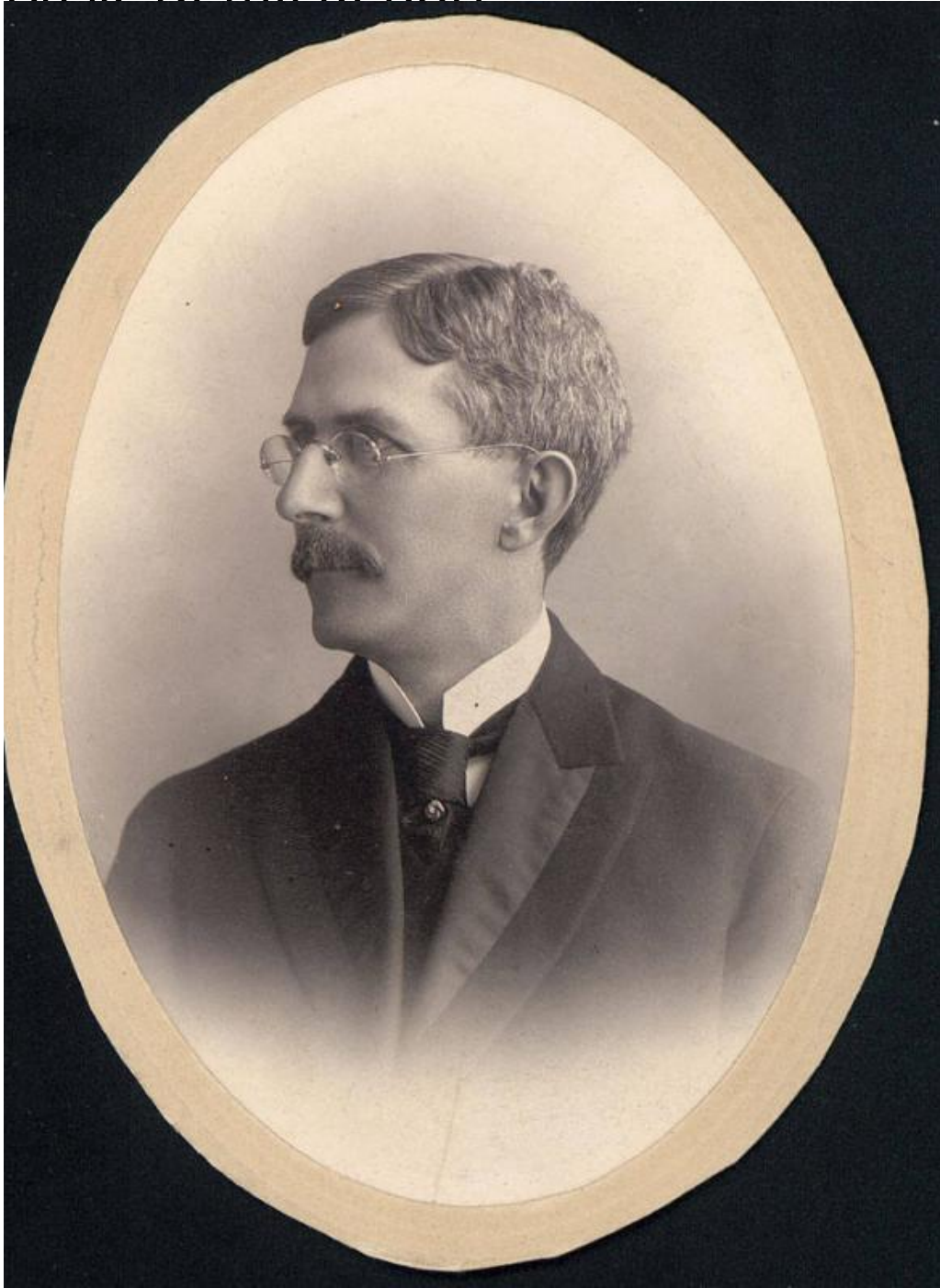


Basic Detail Report



Title Martin Welles

Date early 20th century

Primary Maker Dana

Medium Photography; albumen prints, silver gelatin prints, platinum prints on paper, some on cardboard mounts or in paper folders

Basic Detail Report

Description Formal studio portraits of a man with a mustache wearing

eyeglasses, and informal portraits of the same man seated at a desk. Electric

lamps, ink wells, papers, and other office supplies are on the desk. In some

photographs bouquets of flowers are on the desk. In one photograph, taken on 7

January 1941, he is standing and wearing a hearing aid.

Dimensions Primary Dimensions (image height x width): 9 3/8 x 7in. (23.8 x 17.8

cm) or smaller Sheet (height x width): 9 3/8 x 7in. (23.8 x 17.8cm) or smaller

Mount (height x width): 11 x 8 1/2in. (27.9 x 21.6cm) or smaller