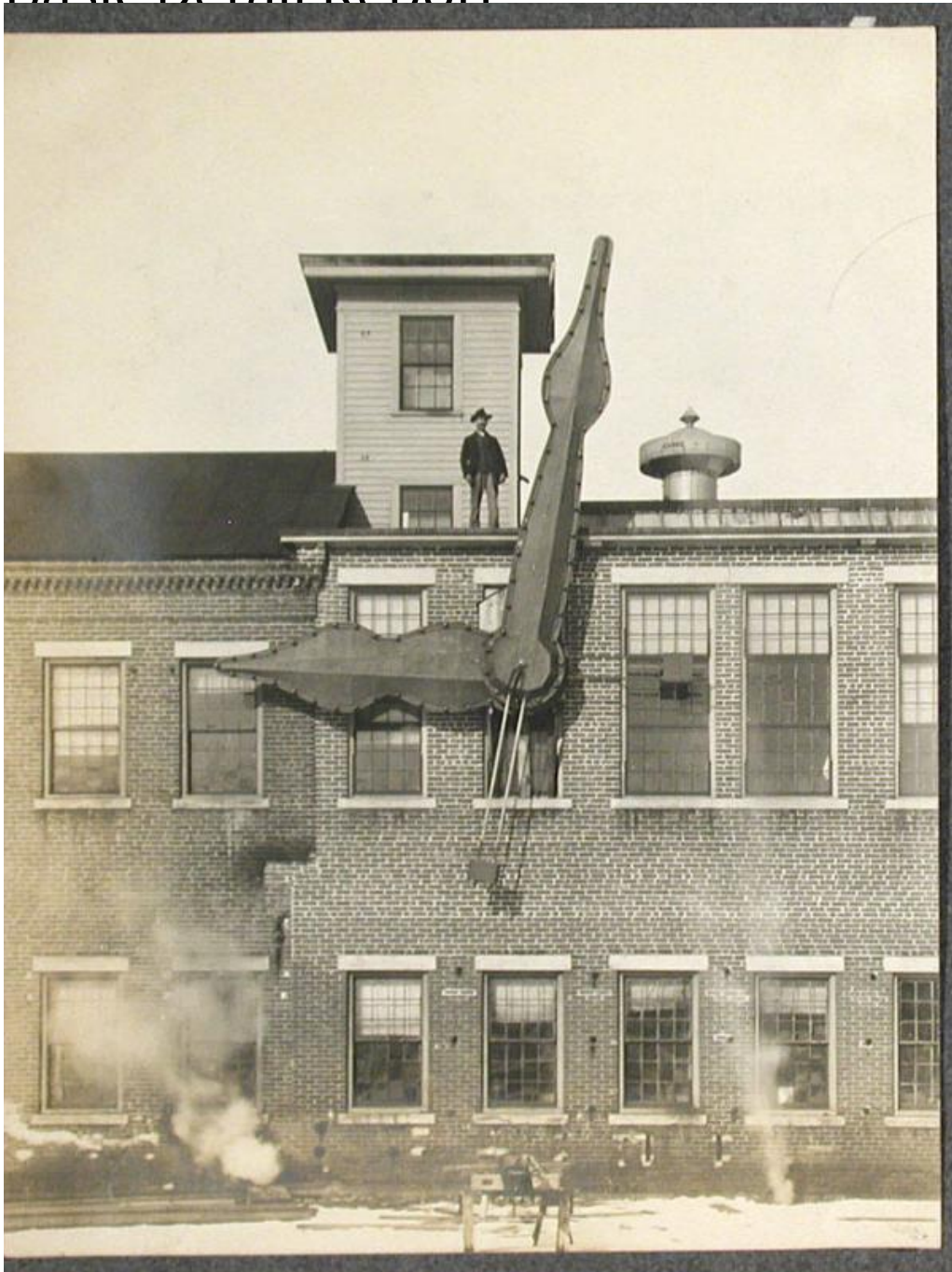


# Basic Detail Report



## Title Views of Thomaston, Connecticut

Date 1890-1910

Primary Maker Unknown

Medium Photography; gelatin silver prints on black paper in photograph album.

Description Photograph album contains photographs of people and places in and around Thomaston, Connecticut. Photographs include children, infants,

# Basic Detail Report

and pets as well as photos of boating and picnics on Bantam and Highland Lake, playing croquet, and horseback riding. There are several photographs of the Seth Thomas Clock Shop factory and pictures of the Colgate Clock face. The first hairdressing parlor in Thomaston is also included in the album. Other photographs from the Thomaston area include Hillside cemetery, Plymouth Park, the Clock Shop Dam, the quarry, Main Street, Center Street, Elm Street, Goodwin Block, the Trolley Bridge, and Luther Holt's Farm. Included in the views of Thomaston is a photograph of the laying of the cornerstone for the Catholic Church. Surnames include Simmons, Ford, Barrett, Thomas, Barnes, Benson, Burnell, Stone, Gay, Botsford, Fischer, Nicholson, Ransome, Woodruff, Parsons, Muller, and Holt. There is a photograph of a ball game played on Plume and Atwood meadow and of costumed actors from the play H. M. S. Pinafore. The Greystone Falls and dam are pictured in the album as are Shady Dell, and an unidentified quarry. Several views are of the Swedish American community in Thomaston including the interior of the Swedish Lutheran Church on Main Street and the Swedish Congregational Sunday School are included in the album. Both Churches are decorated with Christmas garlands and Christmas trees.

Dimensions Primary Dimensions (Image height x width): 7in. (17.8cm) Sheet  
(height x width): 7 x 10in. (17.8 x 25.4cm) Other (height x width x depth): 7 1/4 x  
10 1/4 x 1in. (18.4 x 26 x 2.5cm)