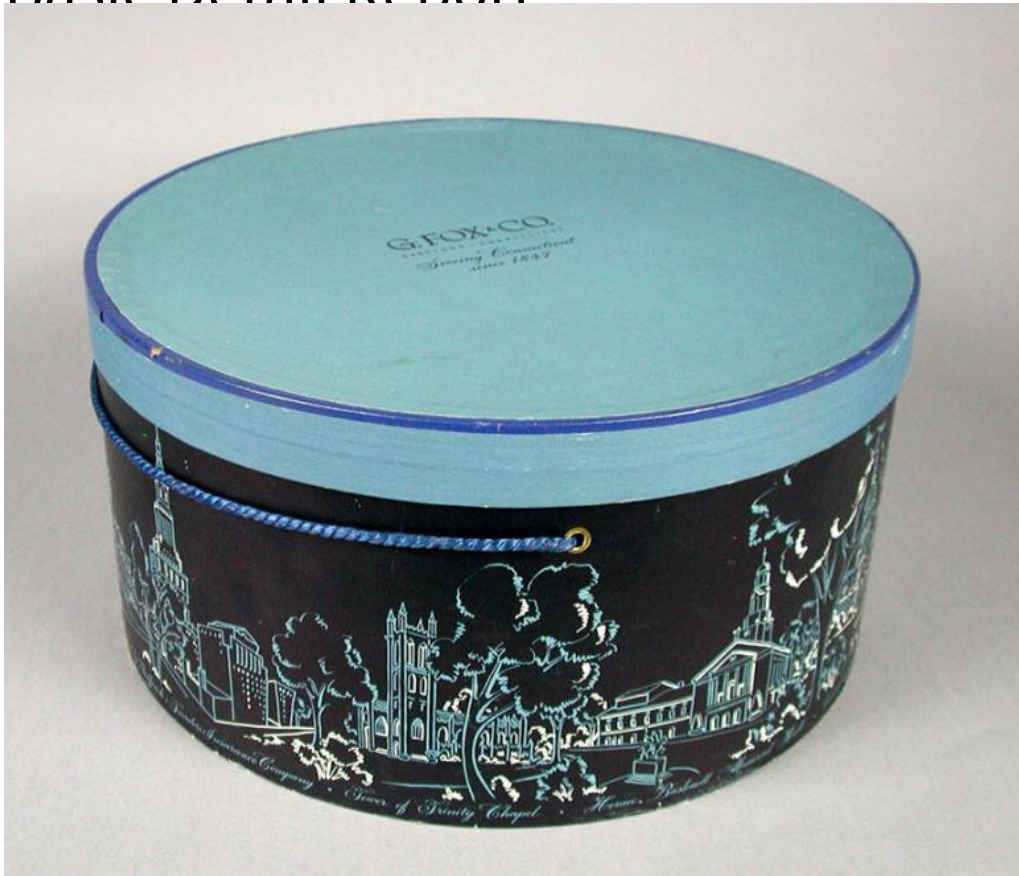


# Basic Detail Report



## Title Hat Box

Date 1940-1970

Primary Maker G. Fox and Co.

Medium Printed paper affixed to cardboard with cord handle and brass grommets

Description Round, two-piece hatbox made of printed paper affixed to cardboard with a handle fashioned from blue cord made to commemorate the centennial of the founding of the G. Fox & Co. department store in Hartford. The lid is blue and the box has a black background with the buildings, etc. outlined in blue with white highlights. Among the images depicted on the hatbox are the Old State House, the Traveler's Insurance Co. building, the Tower of Trinity Chapel, the Horace Bushnell Memorial Hall, the Connecticut State Supreme

# Basic Detail Report

Court Building, the Congregational Church of Farmington, the Aetna Life

Insurance Co., and G. Fox & Co.

Dimensions Primary Dimensions (height x diameter): 7 x 14in. (17.8 x 35.6cm)