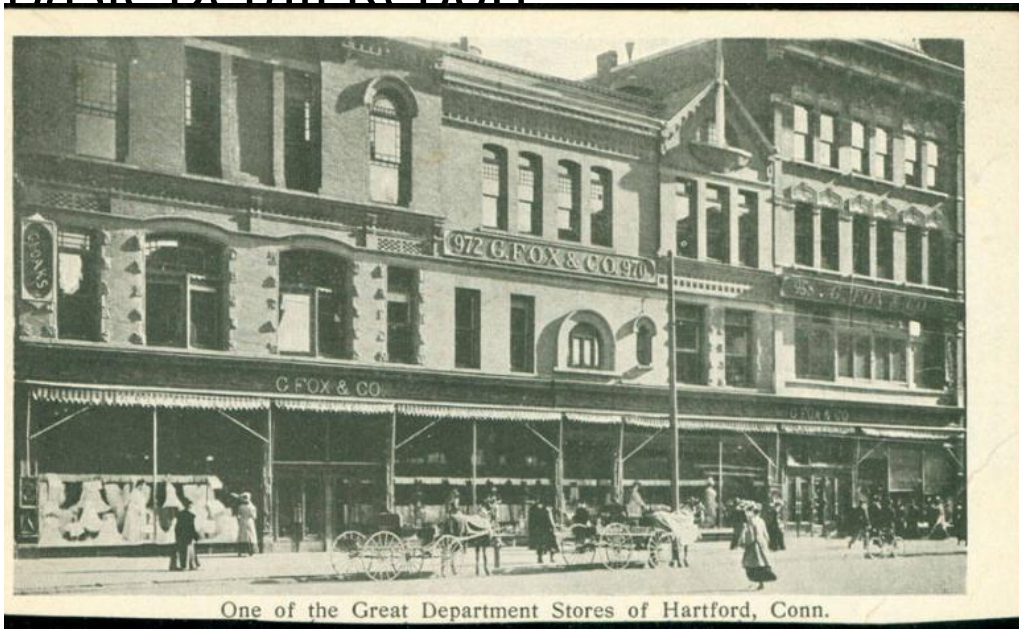


Basic Detail Report



Title Postcards of Hartford, Plainville, and Stratford Buildings

Date mid 20th century

Medium Photomechanical print on postcard; albumen print on postcard; color photography on postcard

Description Group of postcards show various locations around Connecticut, including the G. Fox & Co. department store (2007.24.660-.663), the Phoenix Mutual Life Insurance Company building (2007.24.664), the Hartford Public Library (2007.24.665), and the Mark Twain House (2007.24.666), all in Hartford, the American Shakespeare Festival Theatre in Stratford (2007.24.667), and the YMCA building in Plainville (2007.24.668). 2007.24.660-.662 are all views of the G. Fox & Company department store on Main Street in Hartford after the January 1917 fire that destroyed most of the store. In one postcard (.660), a fire truck and firemen are in front of the store and the hose is still spraying water onto the

Basic Detail Report

building. 2007.24.663 shows the G. Fox & Company department store after 1917.

The caption on the bottom of the postcard reads, "One of the Great Department Stores of Hartford, Conn."

Dimensions Primary Dimensions (height x width): 3 5/8 x 5 5/8in. (9.2 x 14.3cm)

and smaller