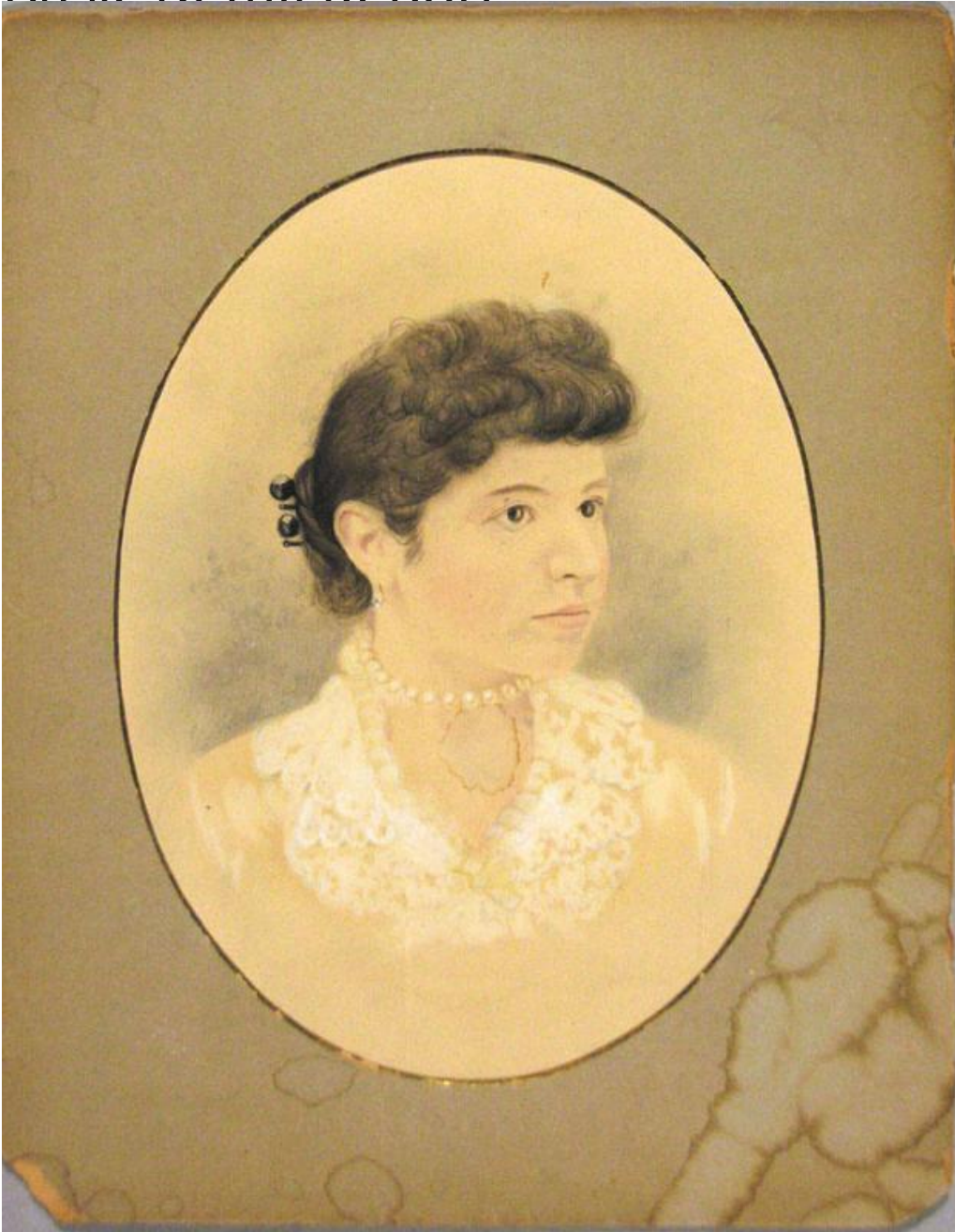


# Basic Detail Report



## Title Portrait of Meta Heinze Tatro

Date 1870-1890

Primary Maker Elmira Portrait Company

Medium Photography and drawing; albumen print with watercolor and gouache,  
on paper on cardboard mount.

# Basic Detail Report

Description The photograph is a bust-length formal studio portrait of Meta

Heinze. Meta is facing left and wearing a dress with a lace collar, a pearl necklace, and diamond earrings. She has black beaded hairpins in her hair.

Dimensions Primary Dimensions (image height x width): 7 3/4 x 6in. (19.7 x 15.2 cm) Sheet (height x width): 10 1/8 x 8 1/8in. (25.7 x 20.7cm)