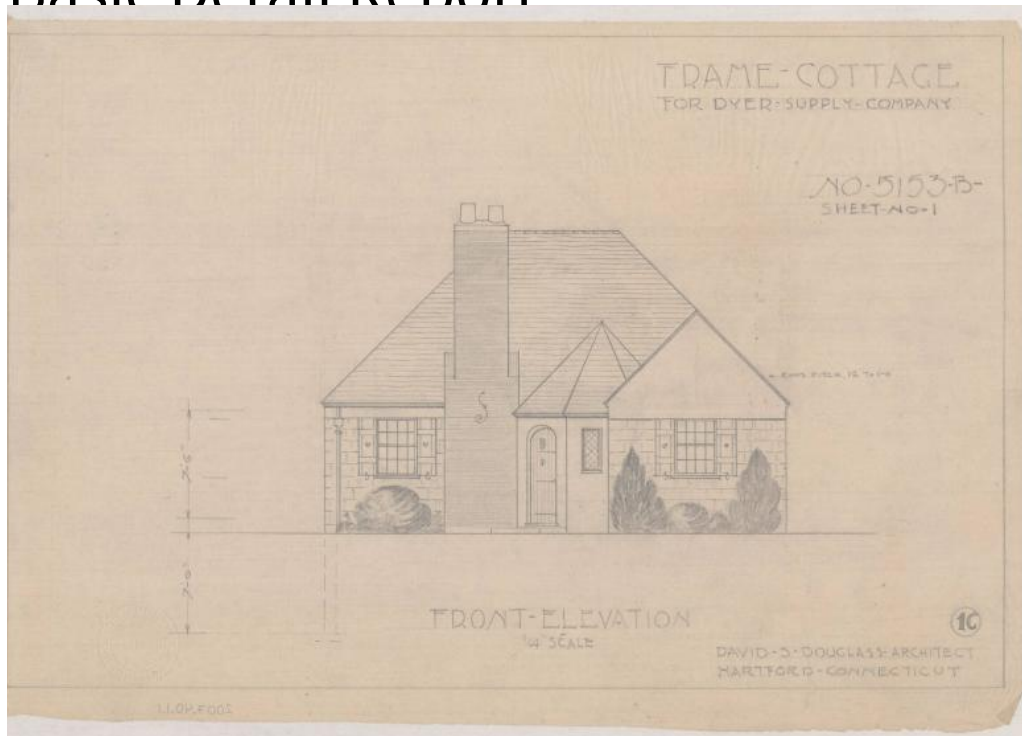


Basic Detail Report



Title Architectural Drawings by David Stuart Douglass

Date 1920-1944

Primary Maker David Stuart Douglass

Medium Drawings; pencil on tracing paper, watercolor on paper.

Description Plans and elevations for an assortment of domestic, suburban architecture. Drawings include plans and elevations for number of building types described by architect as: Frame Cottage, Frame Brick House, Stone Frame Residence, Brick Cottage, Frame House, Frame Dwelling, Frame Bungalow, Cape Cod Cottage, Country House, Harding Terrace, Colonial Brick House. There are also sketches of neighborhood developments. Clients for plans typically include developers like; Adolph Bahler, Aime Demars, August Tobler, Louis Maglaty, David Carlson and August Keuhn or builders like; H.A. Bosworth, Oscar L. Johnson, Mohawk Incorporated and the Homestead Building Company,

Basic Detail Report

as well as numerous other residential clients. Most building types are "Frame Cottages" which can range from a three bay, 1 1/2 story, "Cape Cod" Colonial Revival with two dormers on a side gabled roof to a three bay, 2 story Colonial Revival with side gabled roof. Entrances typically feature one or more of the following classical details; portico, sidelights, broken pediment, pilasters, columns or fanlight. Windows range from double hung sash to bay. A garage, portico entrance or porch entrance can sometimes be found on the flank of a building. Chimneys can be featured on the side or front. A "Stone Frame Residence" is of stone structure. Plans usually include foundation, main floor and second floor, while elevations show front side, rear side, left side and right side. The plan is similar throughout all of the Frame Cottages, and includes; porch, living room, dining room, kitchen, lavatory, garage, fireplace, master bedroom and bedroom. Scale for drawings is 1/4" = 1'0".

Dimensions Sheet (height x width): 12 x 18in. (30.5 x 45.7cm)