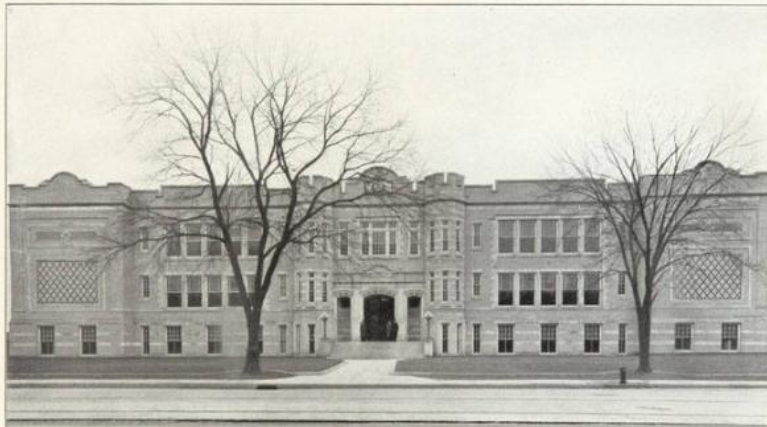


Basic Detail Report



THE ALFRED E. BURR GRAMMAR SCHOOL
South District, Hartford, Conn.
WHITEX & McMAHON, Hartford, Architects

c. 1914

Title Burr School, Hartford

Date about 1914

Primary Maker John J. McMahon

Medium Photomechanical print (half-tone); printer's ink on paper

Description View of the front entrance to the Alfred E. Burr Grammar School in Hartford. Three men stand on the front steps of the building. The inscription above the front doorway says, "ALFRED E. BURR SCHOOL". Two leafless elm trees grow in the grassy lawn in front of the building.

Dimensions Primary Dimensions (image height x width): 3 13/16 x 7in. (9.7 x 17.8 cm) Sheet (height x width): 6 1/4 x 9 1/2in. (15.9 x 24.1cm)