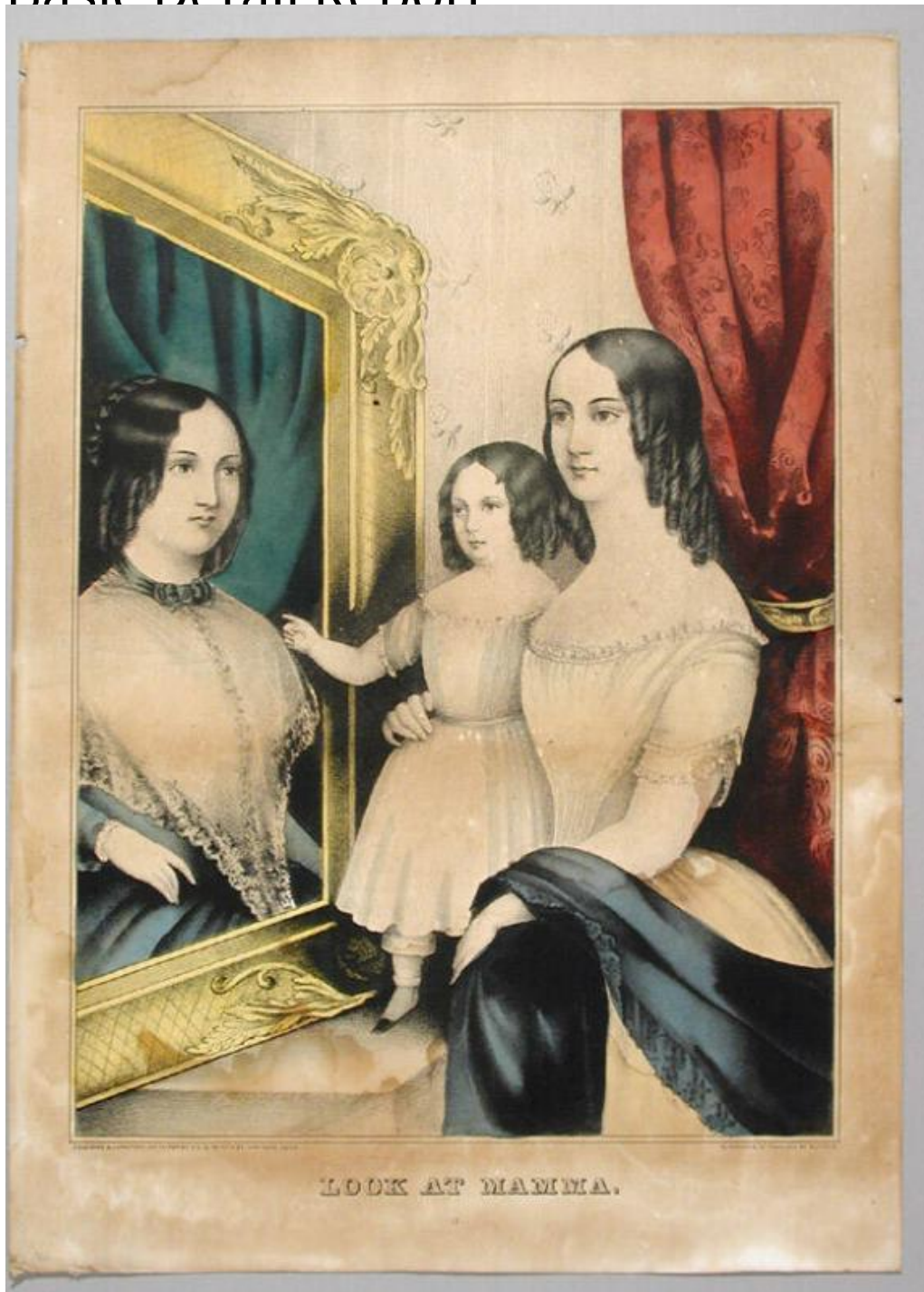


Basic Detail Report



Title Look at Mamma.

Date 1848-1850

Primary Maker Kelloggs & Comstock

Medium Lithography; printer's ink and watercolor on wove paper

Basic Detail Report

Description A woman holds up a young child, probably a girl, to look at a framed portrait, probably an oil painting, of a woman. She wears a dress with short sleeves and has a shawl draped over her left arm. Her hair is in ringlets. The child wears a short dress and pantalets. Her hair is also in ringlets. The woman in the portrait wears a dress with a large lace collar or bertha. Patterned wallpaper is on the wall. Drapery is at the right.

Dimensions Primary Dimensions (image height x width): 11 5/8 x 9 9/16in. (29.5 x 24.3cm) Sheet (height x width): 10 13/16 x 9 15/16in. (27.5 x 25.2cm)