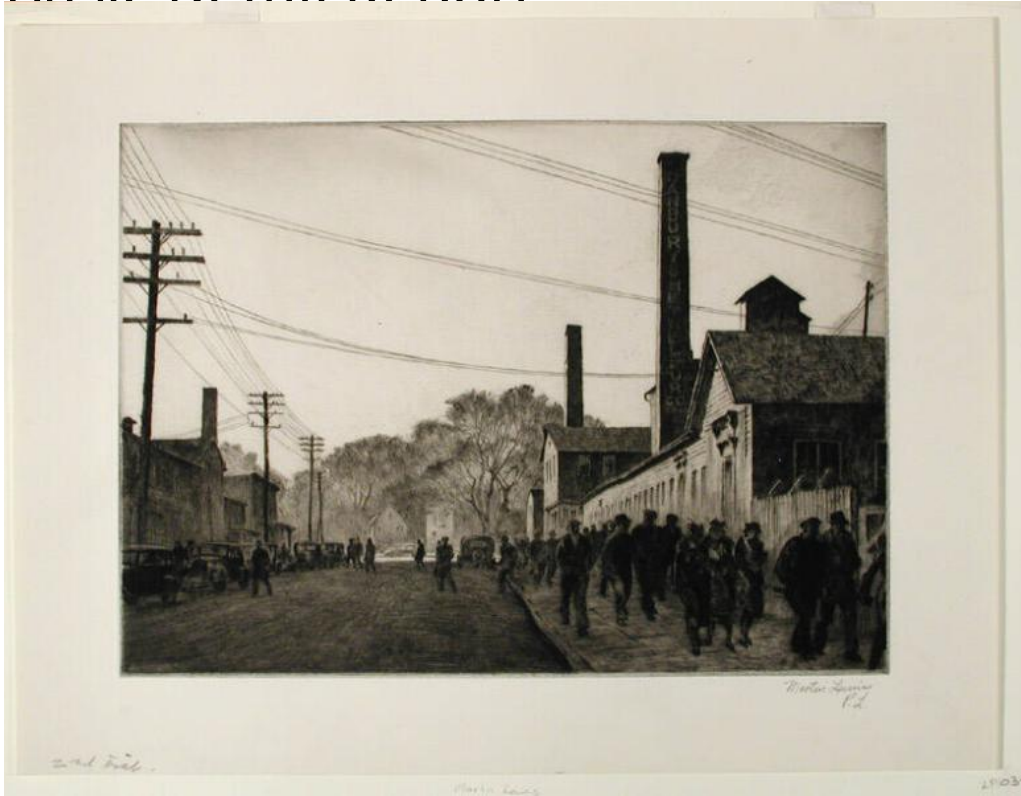


# Basic Detail Report



## Title Day's End

Date 1937

Primary Maker Martin Lewis

Medium Drypoint; printer's ink on wove paper

Description Men and women walk along the sidewalks at the left and right of a paved street. Industrial buildings with smokestacks line both sides of the street.

The smokestack on the right has vertical lettering that reads: "DANBURY & BETHEL FUR CO. INC." Automobiles are parked on the left side of the road.

Utility poles line the left side of the road, and utility wires cross the road. Trees and houses are in the background. It appears to be twilight; the foreground, especially the left side of the street and the righthand sidewalk, are deep in shadow.

# Basic Detail Report

Dimensions Primary Dimensions (image height x width): 9 5/8 x 13 1/2in. (24.4 x

34.3cm) Platemark (height x width): 9 5/8 x 13 1/2in. (24.4 x 34.3cm) Sheet

(height x width): 13 1/8 x 17 1/8in. (33.3 x 43.5cm)