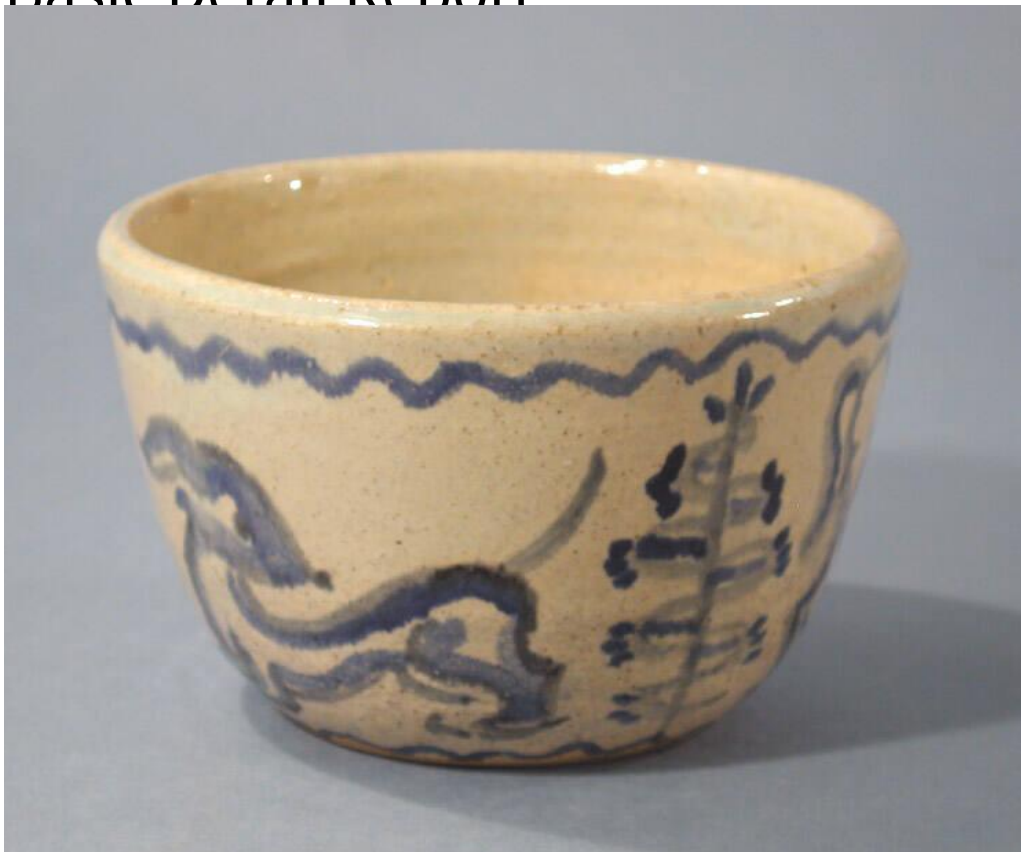


Basic Detail Report



Title Bowl

Date late 19th-late 20th century

Primary Maker Matilda Sewall

Medium Wheel-thrown tan-colored stoneware with cobalt blue decoration

Description Small, round, stoneware bowl with a plain rim and nearly vertical sides. An off-white glaze with brown speckles coats the exterior and interior of the bowl, but the foot is not glazed. The outside of the bowl has naïve hand-painted cobalt blue borders and designs. The bowl has two identical borders, each consisting of an undulating line; one line circles the rim, and the other circles the foot. Between these borders, three dogs are drawn between three evenly-spaced trees. There is crazing over all the glazed surfaces.

Dimensions Primary Dimensions (height x diameter): 3 x 4 1/2in. (7.6 x 11.4cm)