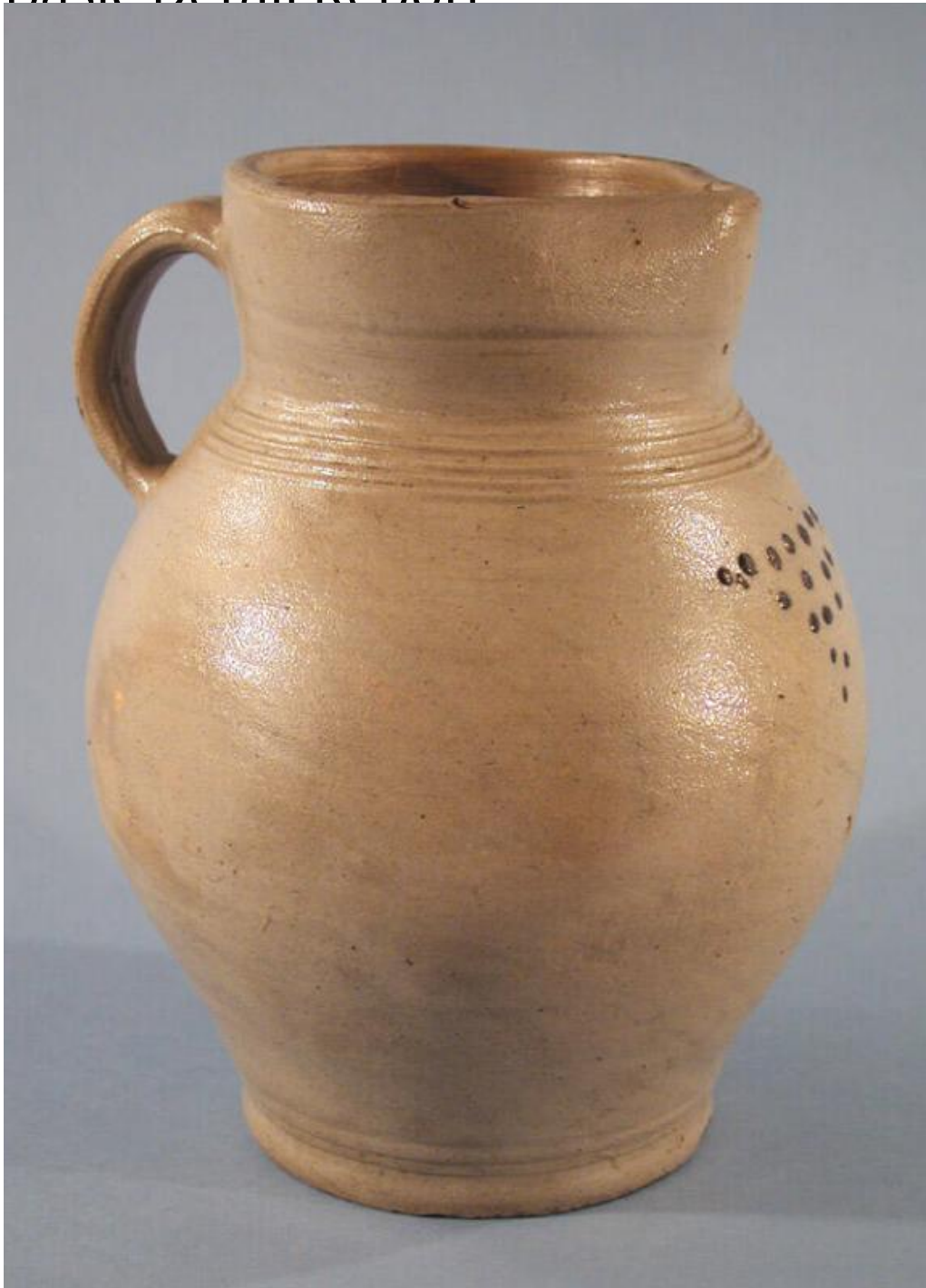


# Basic Detail Report



## **Title Pitcher**

Date about 1790

Primary Maker Abraham Mead

Medium Wheel-thrown salt-glazed stoneware with cobalt blue decoration

# Basic Detail Report

Description Round, ovoid stoneware pitcher with a salt glaze and cobalt blue

decoration. The pitcher has a straight, thick rim that curves forward to form a

spout. Beneath the rim is a narrower neck, with ribbed lines circling the pitcher

just below the neck. Beneath the spout are seventeen dots of cobalt blue that

are arranged in an inverted triangle. A short, pulled, strap handle has been

applied opposite the spout. Parts of the glaze have a slight greenish tint, and the

inside of the pitcher may have a light yellow slip glaze. There is one horizontal

and one vertical crack in the stoneware on the side, to the left of the handle.

Dimensions Primary Dimensions (height x width x depth): 9 3/4 x 7 1/8 x 6 13

/16in. (24.8 x 18.1 x 17.3cm)