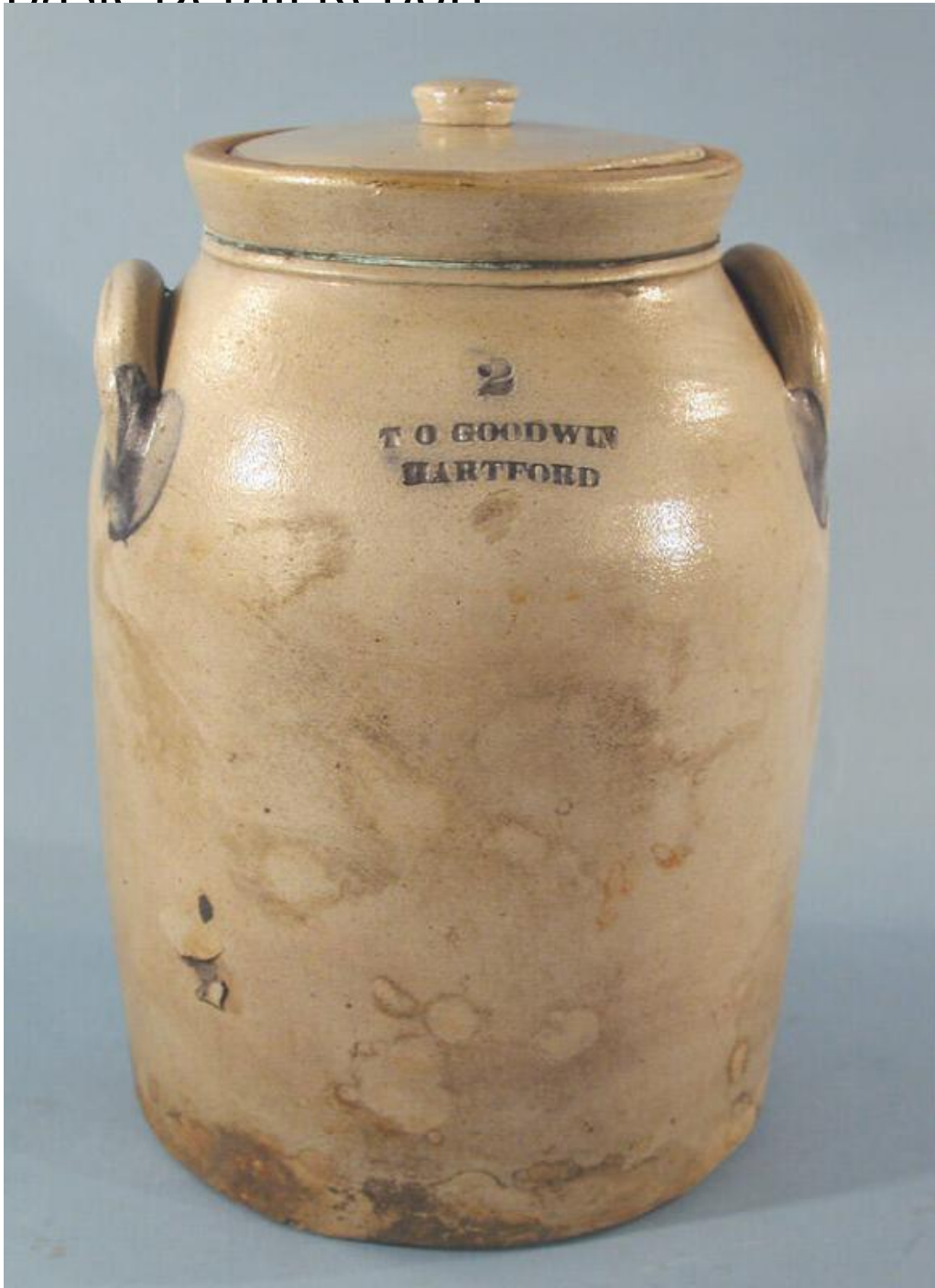


Basic Detail Report



Title Lidded Jar

Date early 19th-mid 19th century

Primary Maker Thomas O'Hara Goodwin

Medium Wheel-thrown stoneware with a salt glaze exterior, brown slip glaze interior, and cobalt blue decoration

Basic Detail Report

Description Cylindrical, small-mouthed, grey lidded stoneware jar with hand-

painted cobalt blue decoration. The exterior of the jar (.a) has a salt glaze, and

the interior of the jar has a brown slip glaze, or Albany-type slip glaze. The jar

has a cylindrical body that narrows at the shoulders to form a neck and slightly

flared rim. There is a ledge circling the inside of the jar which supports a flat lid (.

b) with a small, disc-shaped finial. The lid does not fit perfectly into the jar. A

raised ceramic band and a triple band of copper wire circle the neck of the jar.

Two delicate, pulled lug handles are pressed against opposite sides of the jar

along their full length, attaching completely to the shoulder of the jar. On one

side, between the two handles, is the stamped maker's mark, "2/ T O GOODWIN/

HARTFORD". Cobalt blue has been applied to the mark and the base of the

handles. The glaze on the exterior of the jar has browned slightly where it is

applied thickly at the neck and rim, opposite the mark. A break in the surface of

the jar is located to the lower left of the mark. The jar (.a) has several cracks, the

widest of which extends from the rim and down the side of the jar, where it

breaks into three cracks near the base. The copper wire at the neck of the jar

was probably intended to keep the crack from widening further. Dirt has

adhered to the jar near the base. There are three chips in the rim of the lid (.b).

Dimensions Primary Dimensions (height including lid x width including handle x

depth): 11 1/2 x 7 x 5 3/4in. (29.2 x 17.8 x 14.6cm)