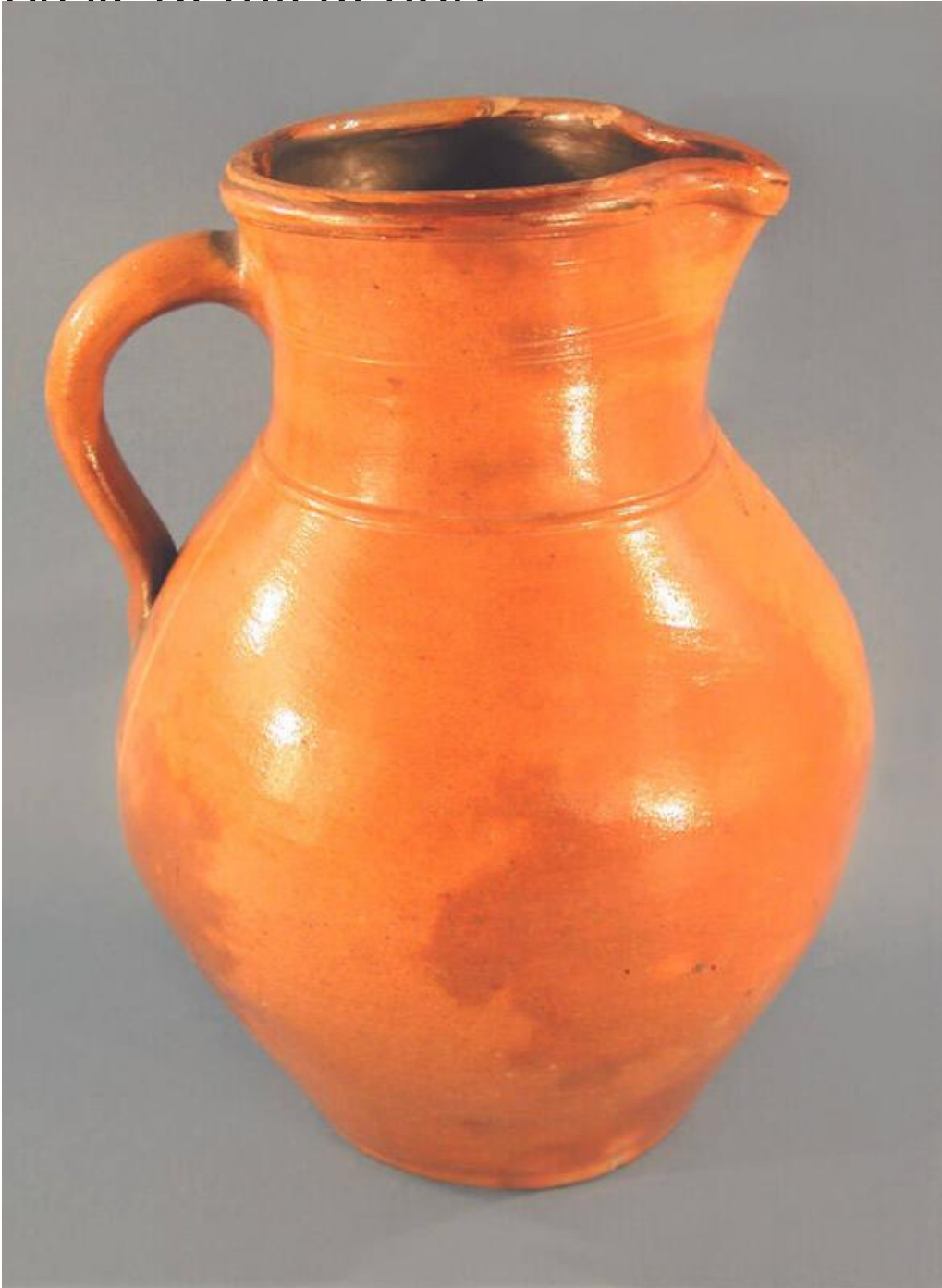


Basic Detail Report



Title Pitcher

Date 1839-1857

Primary Maker M. C. Webster & Son

Medium Wheel-thrown stoneware with a salt glaze, brown slip glaze, and cobalt blue decoration

Basic Detail Report

Description Ovoid, two gallon stoneware pitcher with a light brown salt glaze on the exterior and a brown slip glaze, or Albany-type glaze, on the interior. The pitcher sits on a flat foot and has sides that swell then narrow at the shoulder and neck before forming a slightly flared, rolled rim. A raised band circles the base of the neck, and there are two incised lines about two inches below the rim. One side of the rim has been pulled forward to form a spout. Opposite this, a pulled strap handle connects the neck and middle of the jug. Opposite the handle, and below the spout and raised band, is an impressed mark, "M.C. WEBSTER&SON/ HARTFORD/ 2". Cobalt blue has been applied sparingly to the mark, with more applied at each end of the handle. A small mount of cobalt blue is also found in two drips on the front and side of the spout. The lower sides of the pitcher are a darker brown than the upper portions, probably the result of the firing process. There is an imperfection in the surface of the pitcher and glaze to the lower right of the mark. There is a crack in the side of the pitcher to the left of the handle, and a chip is missing from the surface of the stoneware to the lower left of the handle. There are two small chips in the foot, three small chips in the rim, and an exposed area of stoneware on the inside surface of the neck.

Dimensions Primary Dimensions (height x width including handle x depth): 13 3/4 x 9 x 6in. (34.9 x 22.9 x 15.2cm)