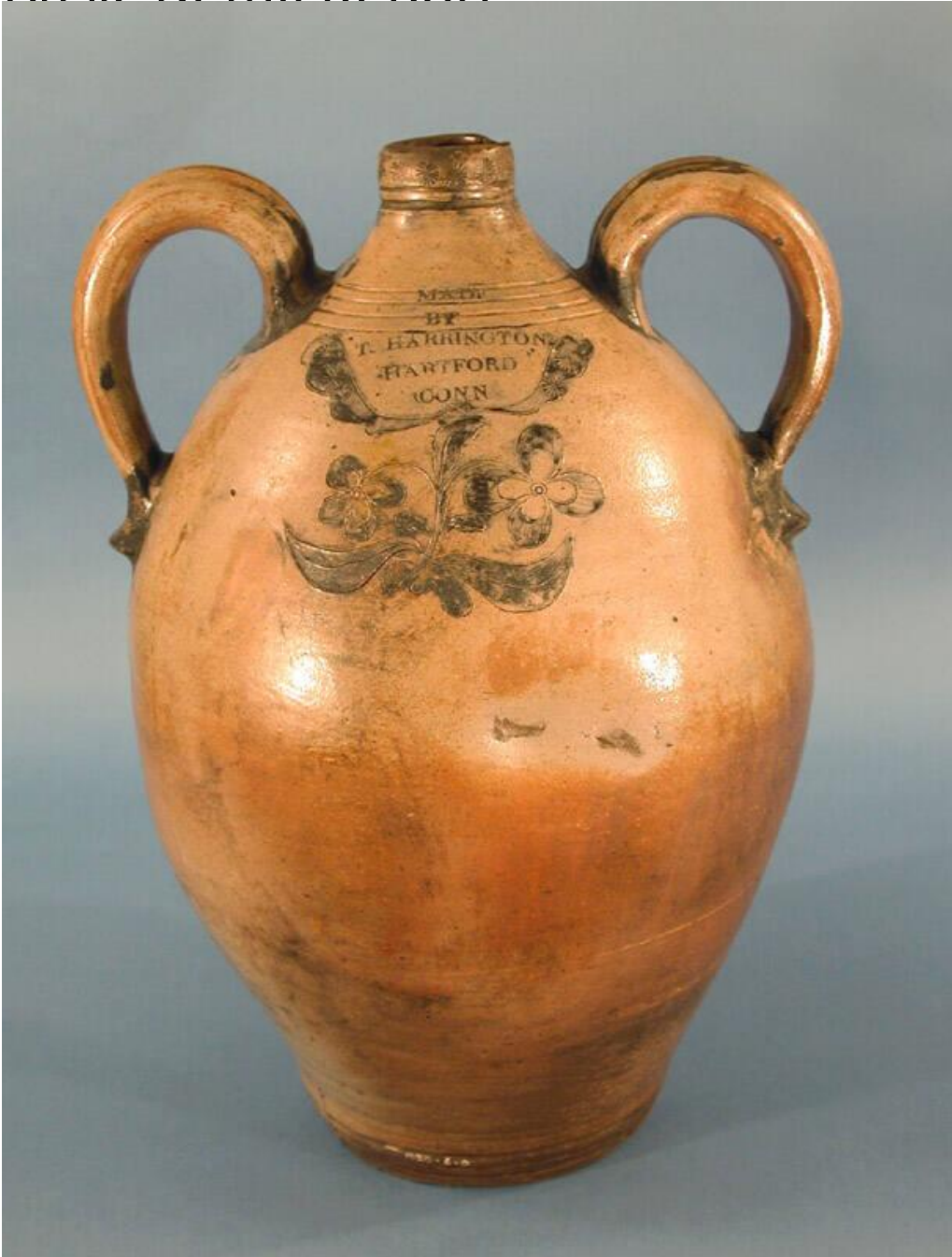


# Basic Detail Report



## Title Water Cooler

Date about 1830-1850

Primary Maker Thompson Harrington

Medium Wheel-thrown stoneware with a salt glaze, brown slip glaze, and cobalt blue decoration

# Basic Detail Report

Description Large, ovoid, stoneware water cooler with a salt glaze on the

exterior and a brown slip glaze, or Albany-type glaze, on the interior. The water

cooler has a flat base and sides that swell gently then narrow at the shoulder

and neck to form a small, plain rim. Impressed rosettes circle the outside of the

rim, with two incised bands below. Four narrow incised lines circle the bottom

of the cooler's neck. The water cooler has two exuberant, pulled strap handles

located on opposite sides that connect the neck and shoulder. Cobalt blue has

been applied at both ends of each of the handles, and impressed rosettes circle

the base of each handle. The cooler has two stamped marks indicating maker

and owner, each on opposite sides between the handles. Each of the marks is

decorated with cobalt blue and is surrounded by incised lines, also filled in with

cobalt blue. The first reads, "MADE/ BY/ T. HARRINGTON./ HARTFORD/ CONN".

This mark is surrounded by impressed rosettes and incised lines below, creating

a swag, two flowers, leaves, and a stem. On the opposite side of the water

cooler, the mark reads, "ISAIAH GILBERT,/ WEST HARTFORD./ CONN." This is

surrounded by two sprigg-molded tassels, impressed rosettes, and additional

incised lines creating a swag below the mark. A circular spout is located beneath

this mark, at the base of the water cooler. The spout is circled by impressed

rosettes and cobalt blue decoration. Two raised lines circle the base of the water

cooler. Above the spout is a large, textured, raised, grey area, which occurred at

the time of manufacture. Two cracks, or possibly incised lines, emerge from this

area to the lower right. On the opposite side, below the mark, part of the water

cooler is indented. There are also indentations near the base of each handle.

# Basic Detail Report

Overall, the salt glaze changes from grey to light brown, and at times, dark brown. There is a lengthy but shallow chip in the rim. One of the handles cracked near the base and was repaired at some time in the past.

Dimensions Primary Dimensions (height x width including handles x depth): 20 x 14 x 13in. (50.8 x 35.6 x 33cm)