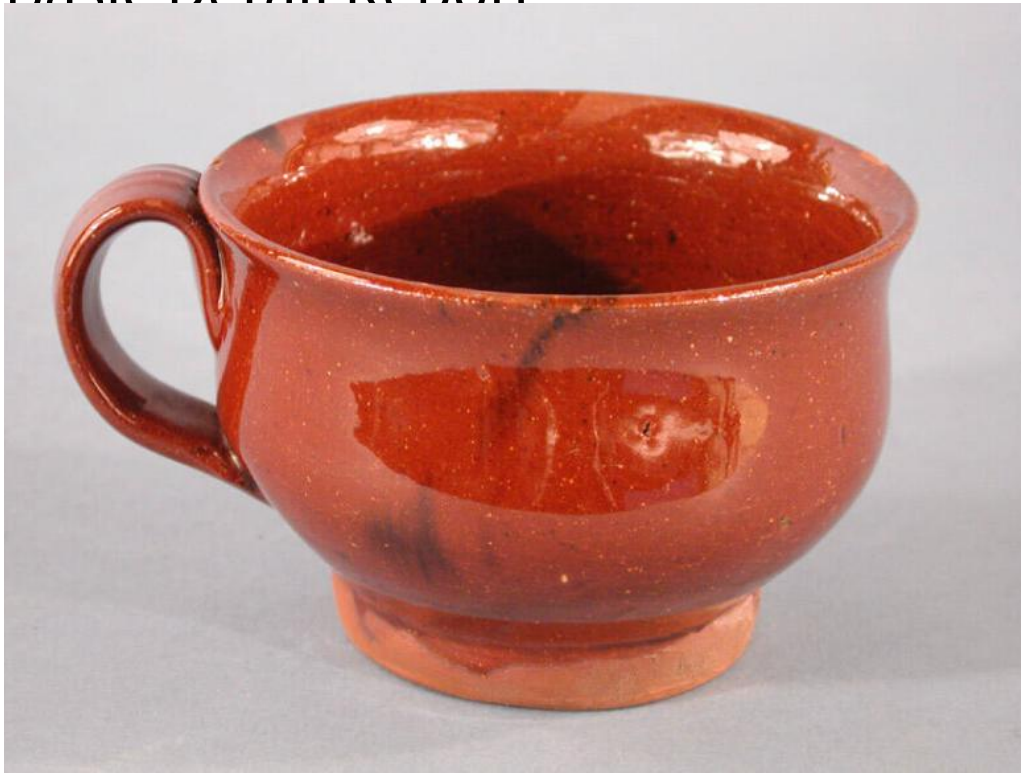


Basic Detail Report



Title Cup

Date early 19th century

Primary Maker Unknown

Medium Wheel-thrown redware with a lead glaze and black decoration

Description Round, redware cup with a lead glaze on the interior and exterior, with the exception of the lower inch and bottom of the foot, which are unglazed.

The glaze has small white flecks and some subtle dark dots, as well as one larger area of manganese black to the left of the handle. The cup has a flat base, curved sides, and a flared rim. To one side, an extruded handle connects the rim to the lower half of the cup. There is crazing over all the glazed surfaces of the cup. There are two small chips in the rim, and one on the handle. A crack runs halfway through the top of the handle, a condition problem which may have occurred at the time of manufacture.

Basic Detail Report

Dimensions Primary Dimensions (height x width including handle x depth): 3 x 5

1/4 x 4 1/4in. (7.6 x 13.3 x 10.8cm)