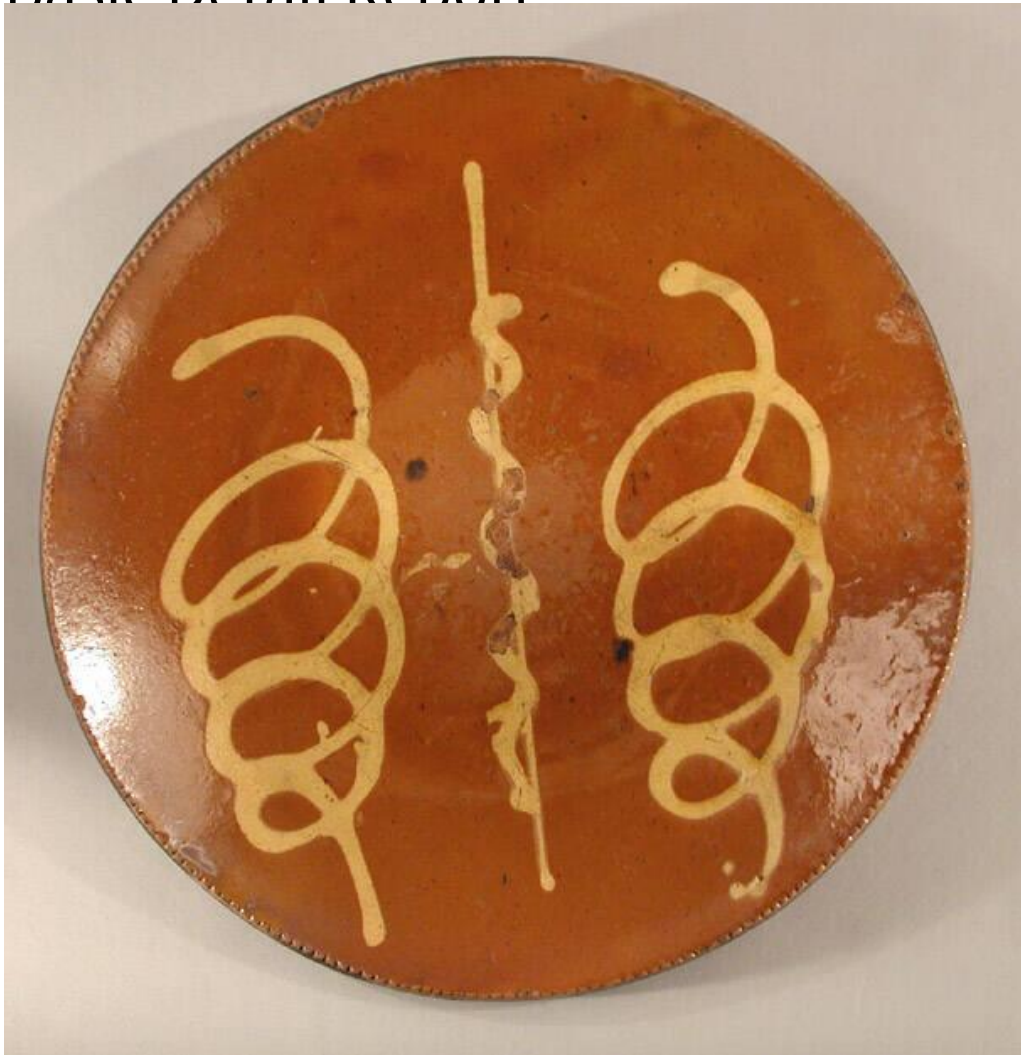


Basic Detail Report



Title Plate

Date about 1830-1850

Primary Maker Smith Pottery

Medium Drape-molded redware with slip decoration and a lead glaze

Description Round redware plate with slip decoration beneath a lead glaze. The plate was formed by trailing white slip over the clay to form two curly lines, with an undulating line over a straight line of slip between. Then, the clay was draped over a rounded mold to give it its shape, before tooling the edge with a roulette wheel. The top surface of the plate is glazed, which gives the white slip a yellow appearance; the bottom is left unglazed. The plate shows considerable wear,

Basic Detail Report

especially to the glaze in the center. The glaze has worn away completely in the

center and has crazed in all other areas of the plate. Three areas of slip

decoration have flaked away from the center of the plate, revealing the redware

below. There are about eight small chips in the rim of the plate.

Dimensions Primary Dimensions (diameter): 11 1/8in. (28.3cm)