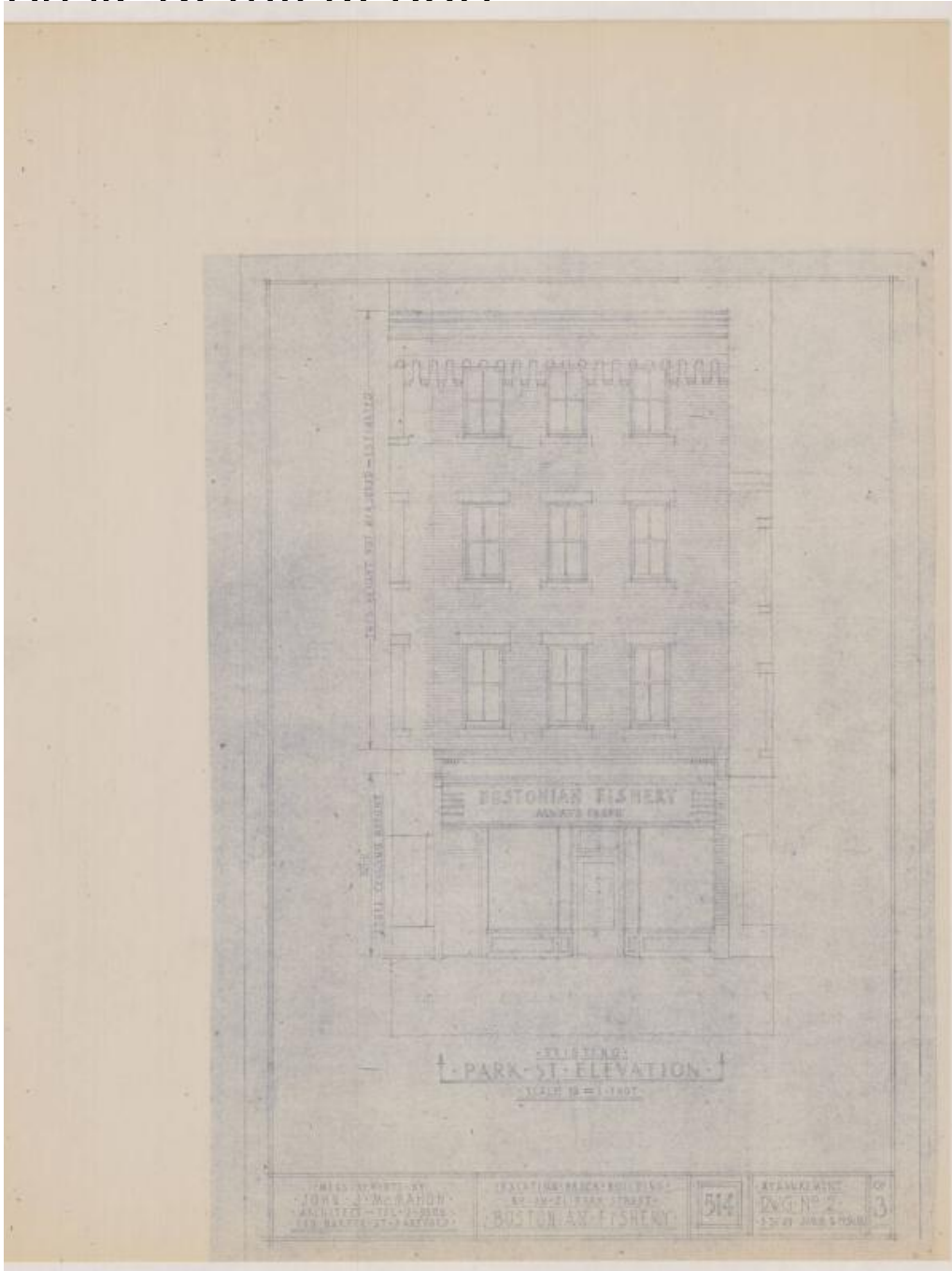


Basic Detail Report



Title Bostonian Fish Market, Hartford

Date 1949

Primary Maker John J. McMahon

Medium Drawings, blueprints; pencil on paper, cyanotype on paper

Description Drawings include plans of existing store floor plan and elevation of Park Street side. Plans include Demonte Estate property, Park Street front, list of

Basic Detail Report

measurement drawings, key to numbers (which are located on plan of display

cases and shelves), entrance ceiling fixture, cash register and safe. Elevation

shows four story, three bay row house with plate windows on store entrance.

Upper windows are two-over-two double hung sash with flat lintels and sills.

There are estimated measurements of top three floors. The roof features a

bracketed overhang. Scale for drawings is $1/4" = 1'0"$.

Dimensions Sheet (height x width): 22 x 17in. (55.9 x 43.2cm)