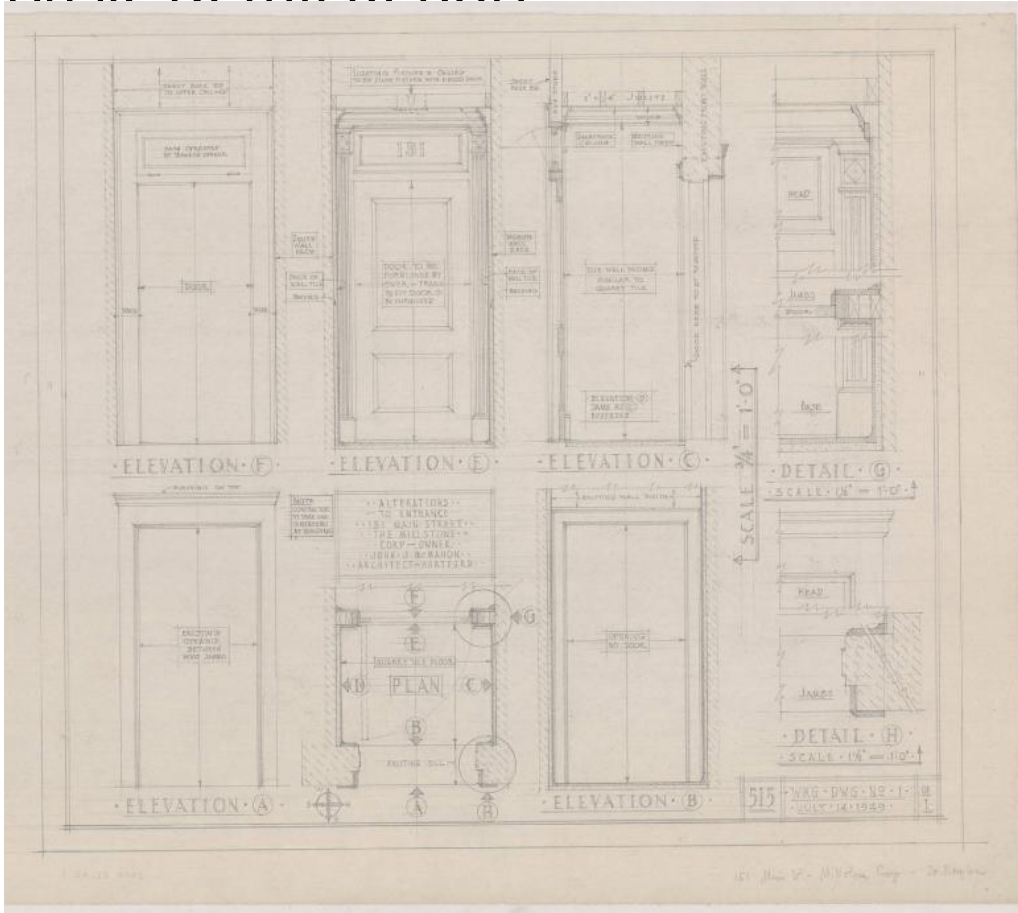


# Basic Detail Report



## Title Dr. James Naylor Store Front

Date 1949

Primary Maker John J. McMahon

Medium Drawings; pencil on paper

Description Drawings include plans for entrance and elevations of store front, window / door, and sides A, B, C, E, F. Sections include A-A, B-B and details of H, G. Plans include quarry tile floor, existing sill, window bulkhead, glass line, cinder blocks, wood furring, new door, porcelain enameled metal base panel, and vestibule. Elevations show doors, sheet rock ceiling, existing opening, sash

# Basic Detail Report

operated by transom opener, alumilite moldings, porcelain enamel sign panel

and plate glass. Sections of new covering of asbestos board, sheathing, window

frame and moldings. Scale for drawings is  $1/2" = 1'0"$  and  $3/4" = 1'0"$ .

Dimensions Sheet (height x width):  $17 \frac{3}{8} \times 20 \frac{1}{4}$ in. (44.1 x 51.4cm)