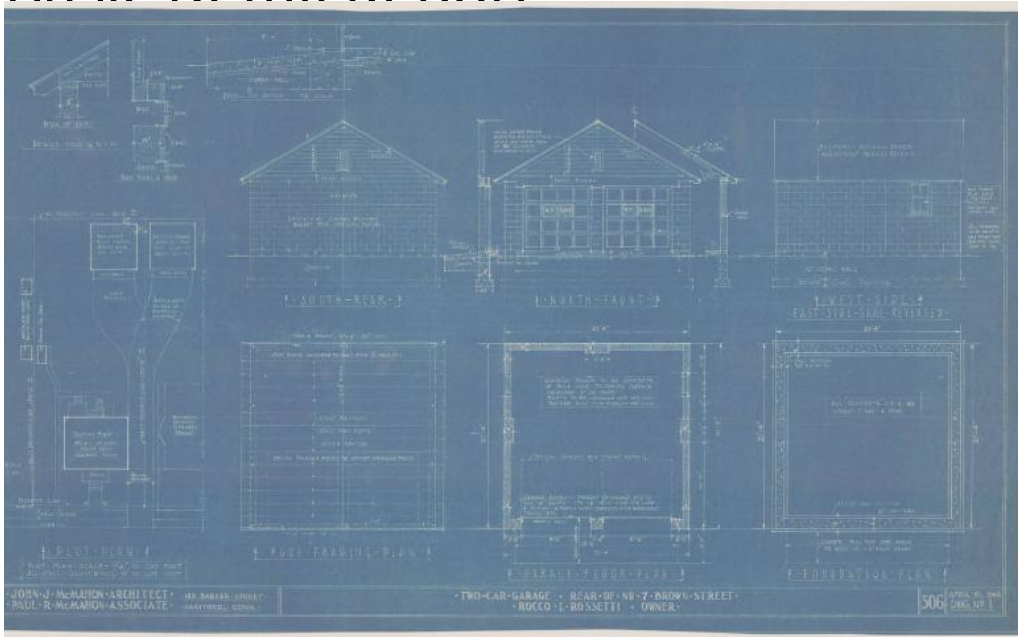


# Basic Detail Report



## Title Rocco Rossetti Garage

Date 1948

Primary Maker John J. McMahon

Medium Blueprint; cyanotype on paper

Description Drawings include plans for plot, roof framing, foundation, garage floor and elevations for front, side, and rear. Also, details of eaves, door jambs and head, apron. Plans include property line, curb, brick ash sheds, existing house, mutual driveway, neighbor property, new cinder block garage, existing frame garage, (existing house is brick, 1st story, frame above gambrel roof), concrete floor, garage doors, rafters and studs. Elevations show cinder block sides, face boards, clapboards, garage door with D.T. Glass roofing paper and asphalt shingles, stock louver frame with fly-screen. Details of rafter and studs.

Scale for drawings is  $1/16" = 1'0"$ ,  $1/4" = 1'0"$  and  $3/4" = 1'0"$ .

Dimensions Sheet (height x width): 18 x 29 7/8in. (45.7 x 75.9cm)