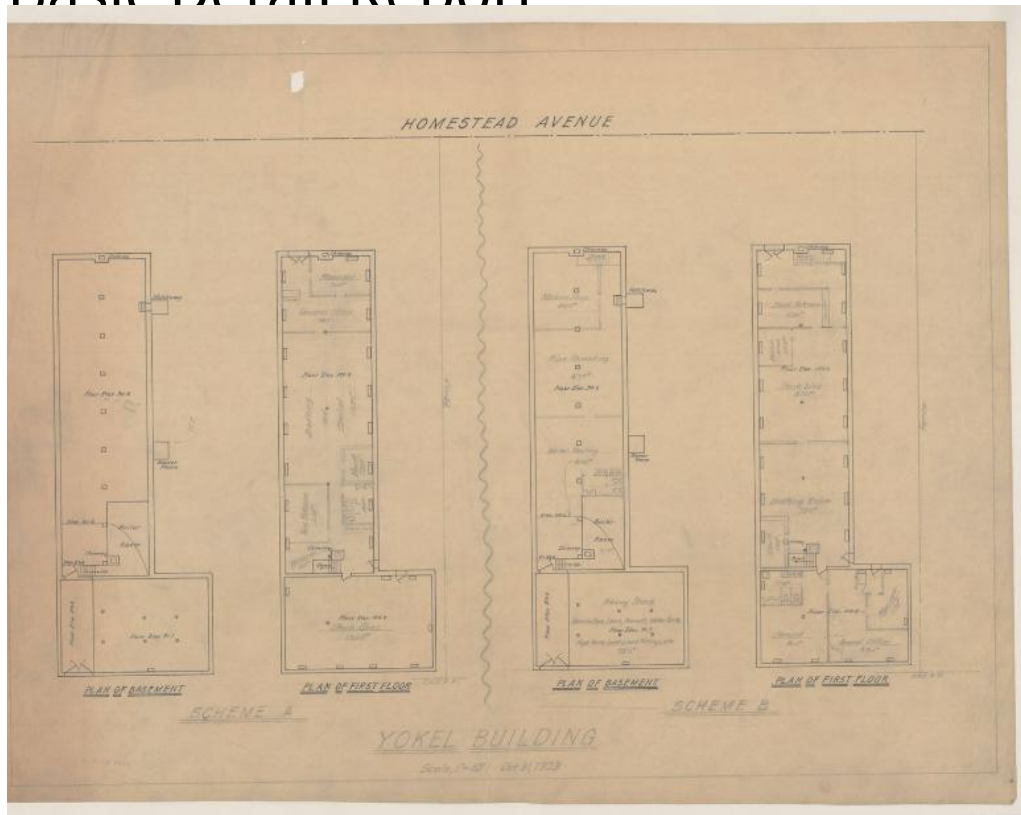


# Basic Detail Report



**Title** The Yokel Corporation, Hartford

**Date** 1923

**Primary Maker** John J. McMahon

**Medium** Drawings, blueprints; pencil on paper, ink on paper

**Description** Drawings include plans for first floor, framing of basement and two alternative plans for basement. Drawings also include elevation of north side, east side and sections of elevation and "A-A". Also, detail of waiting room with accompanied sketches. Plans include hatchway, piers, frames, Homestead Avenue, boiler room, radiators, sewer vent, street line, clerical room, manager's office, general office, drafting room, stock bins, watchman's room, stock bins, yard foreman, machine shop, pipe threading, meter testing and heavy stock

# Basic Detail Report

room. Elevations show a two story, two bay building with paneled windows.

There is a second floor entrance with new transom window. The sections show

the drain trap. Scale for drawings is either  $1/8" = 1'0"$  and  $1'0" = 10'0"$ .

Dimensions Sheet (height x width):  $17 \frac{3}{4} \times 38 \frac{5}{8}$ in. (45.1 x 98.1cm)