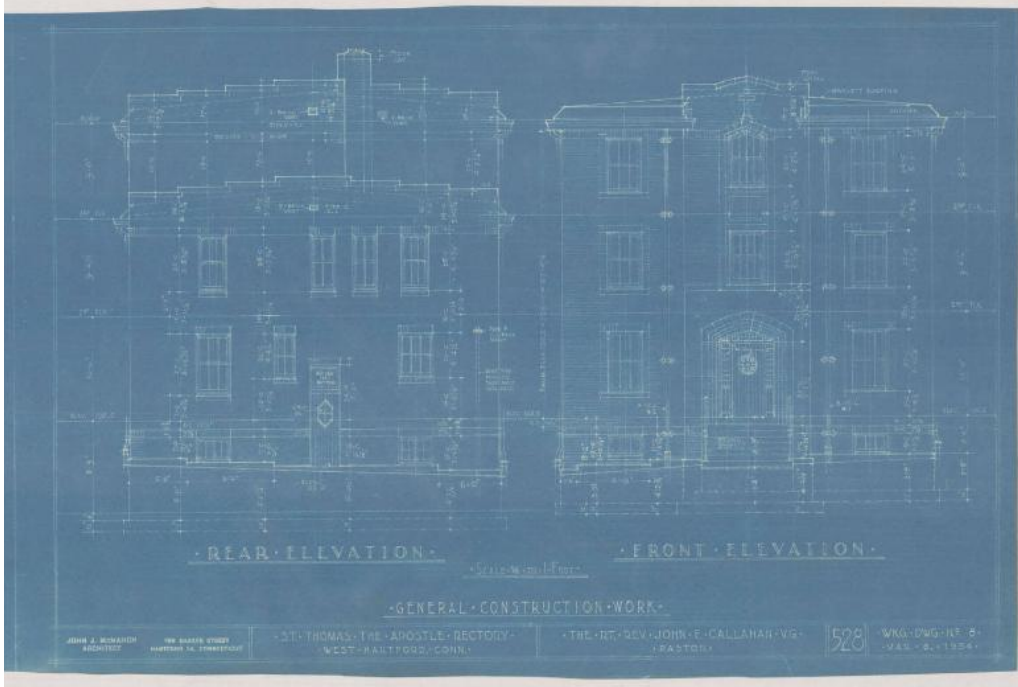


# Basic Detail Report



**Title St. Thomas the Apostle Rectory, West Hartford**

Date 1954

Primary Maker John J. McMahon

Medium Blueprints; cyanotype on paper

Description Drawings include plans for plot, footing and foundation, cellar floor, first floor, second floor, third floor, main roof and elevations for rear, front, east side, west side. Also sections of A-A longitudinal, cross B-B, cross C-C and details of cornice gutter. Plans include Dover Road, Farmington Avenue, rectory, walkway, church of St. Thomas the Apostle, school building, property line, yard drain, compass, cellar floor, unexcavated, boiler room, crawl space, meter room, storage, maid's room, study, guest room, bedroom, clergy corridor, beveled flashing and Barrett roofing. Elevations show three story building with three bays and a low hipped roof with protruding central bay. The entrance features a vertical plank door with quatrefoil and pointed arch lintel. The roof has a crow

# Basic Detail Report

step gable on rear and stop cap chimney. There are three over three double

hung sash windows with a cross on the pointed arch lintel on the top window.

Sections show stairway entrances, linen case, flush panel door, crawl space,

bathroom, bookcase, stairs and storage. Details of brick, anchor, gutter. Scale

for drawings is either  $1/32" = 1'0"$ ,  $1/4" = 1'0"$  and  $1\ 1/2" = 1'0"$ .

Dimensions Sheet (height x width):  $15\ 7/8 \times 24\ 1/2\text{in.}$  (40.3 x 62.2cm)