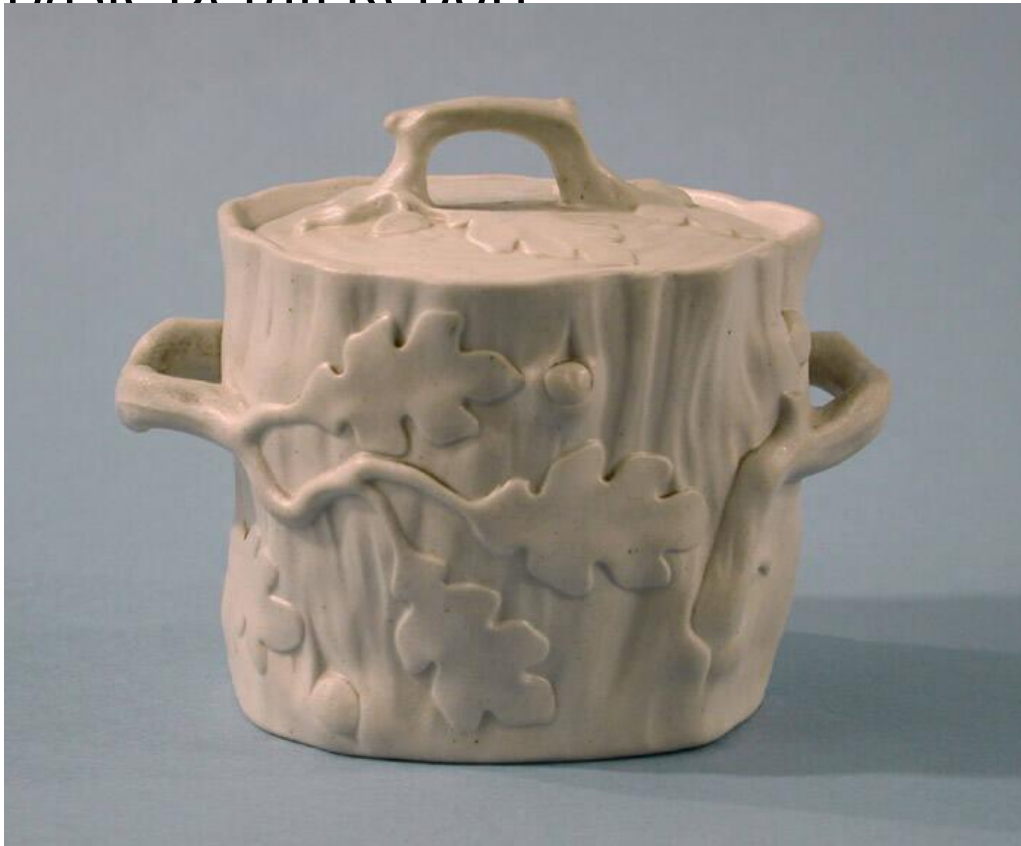


Basic Detail Report



Title Sugar Bowl

Date 1840-1850

Primary Maker Lord family

Medium Mold-formed stoneware

Description Cylindrical, grey, stoneware sugar bowl and lid with a dull matte exterior and shiny glazed interior, a type of stoneware known as drab ware. The sugar bowl (.a) is shaped like the trunk of a tree; molded relief decoration in the form of bark and knots covers the outside. Ceramic branches, which spread out into leaves where they meet the body of the sugar bowl, form the two handles, which are located on opposite sides of the sugar bowl, in the center of each side. The lid (.b) is similarly decorated to imitate the outside of a tree, and includes a small branch and leaf shaped finial in the center. The relief decoration imitates

Basic Detail Report

the natural forms and decorative motifs of the rococo revival style, although at a later date.

Dimensions Primary Dimensions (height including lid x width x depth): $3 \frac{3}{8} \times 4 \frac{1}{2} \times 3 \frac{1}{8}$ in. (8.6 x 11.4 x 7.9cm)