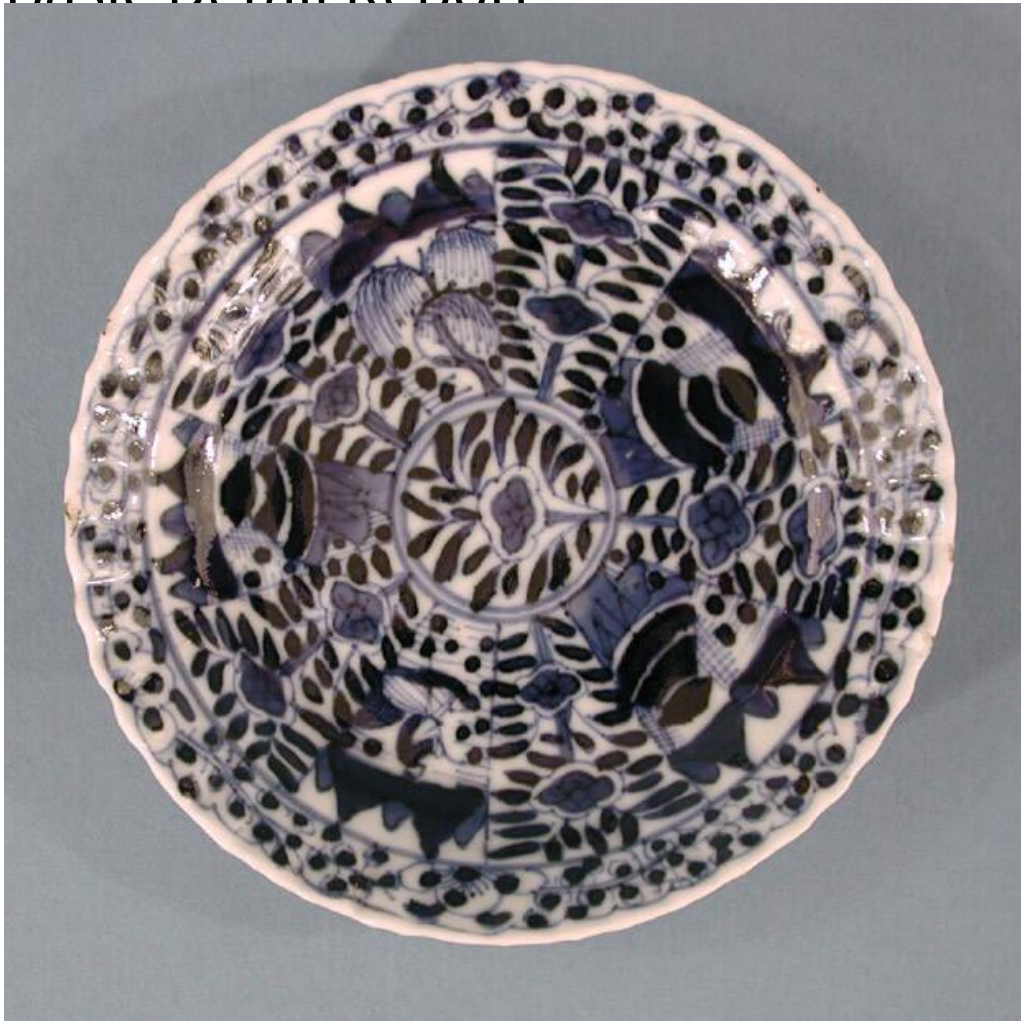


Basic Detail Report



Title Saucer

Date mid 19th-early 20th century

Primary Maker Unknown

Medium Press-molded hard paste porcelain with underglaze cobalt blue decoration

Description Small, round hard paste porcelain saucer (1945.1.1446.2) with a ribbed rim and hand-painted underglaze cobalt blue decoration. The decoration is divided into three concentric areas, beginning with a circle in the center containing a single blue circle and several dark blue leaves. This is surrounded by an area that is divided into ten panels. The panels alternate between

Basic Detail Report

landscape scenes and panels with two flowers surrounded by dark blue leaves.

The landscape scenes vary, and include a willow tree, mountains, structures, and a fishing boat. These panels are surrounded at the rim by a border of dark leaves on a light blue vine. An expanded version of dark blue leaves and flowers on a light blue vine is painted on the underside of the ribbed rim. There are light scratches on the top surface, and two hairline cracks running across the bottom surface of the saucer. We were unable to locate saucer 1945.1.1446.1 at the time of cataloging.

Dimensions Primary Dimensions (diameter of saucer .2): 4 1/8in. (10.5cm)