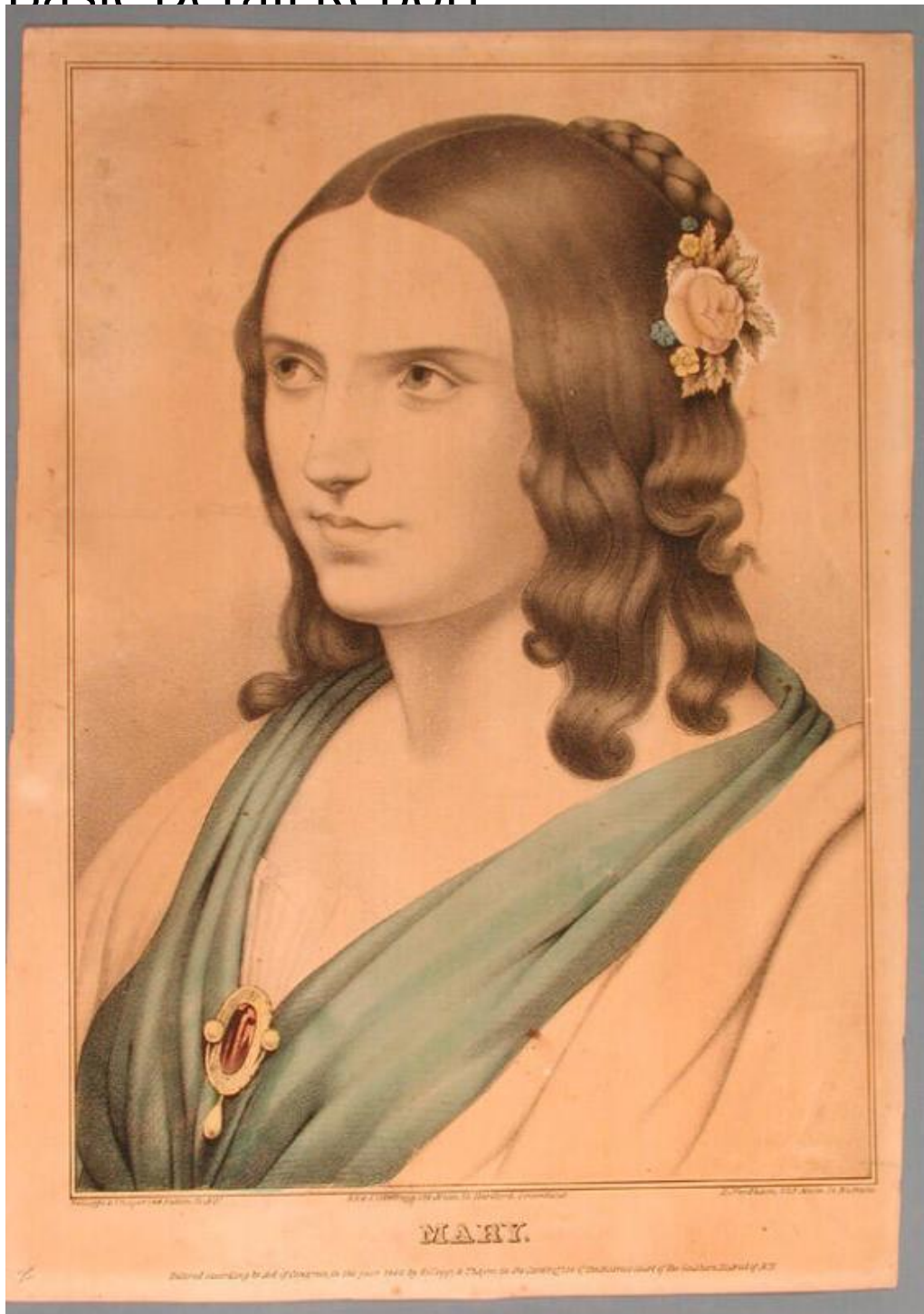


Basic Detail Report



Title Mary.

Date 1846

Primary Maker E.B. & E.C. Kellogg

Medium Lithography; printer's ink and watercolor on wove paper

Basic Detail Report

Description Bust-length portrait of a young woman. She appears to be wearing flowing robes, possibly with a separate scarf or shawl. A brooch with an oval stone, decorated with pearls, is pinned at her breast. A rose and other small flowers are in her hair, near a braided bun.

Dimensions Primary Dimensions (image height x width): 12 7/16 x 8 13/16in.

(31.6 x 22.4cm) Sheet (height x width): 13 15/16 x 10in. (35.4 x 25.4cm)