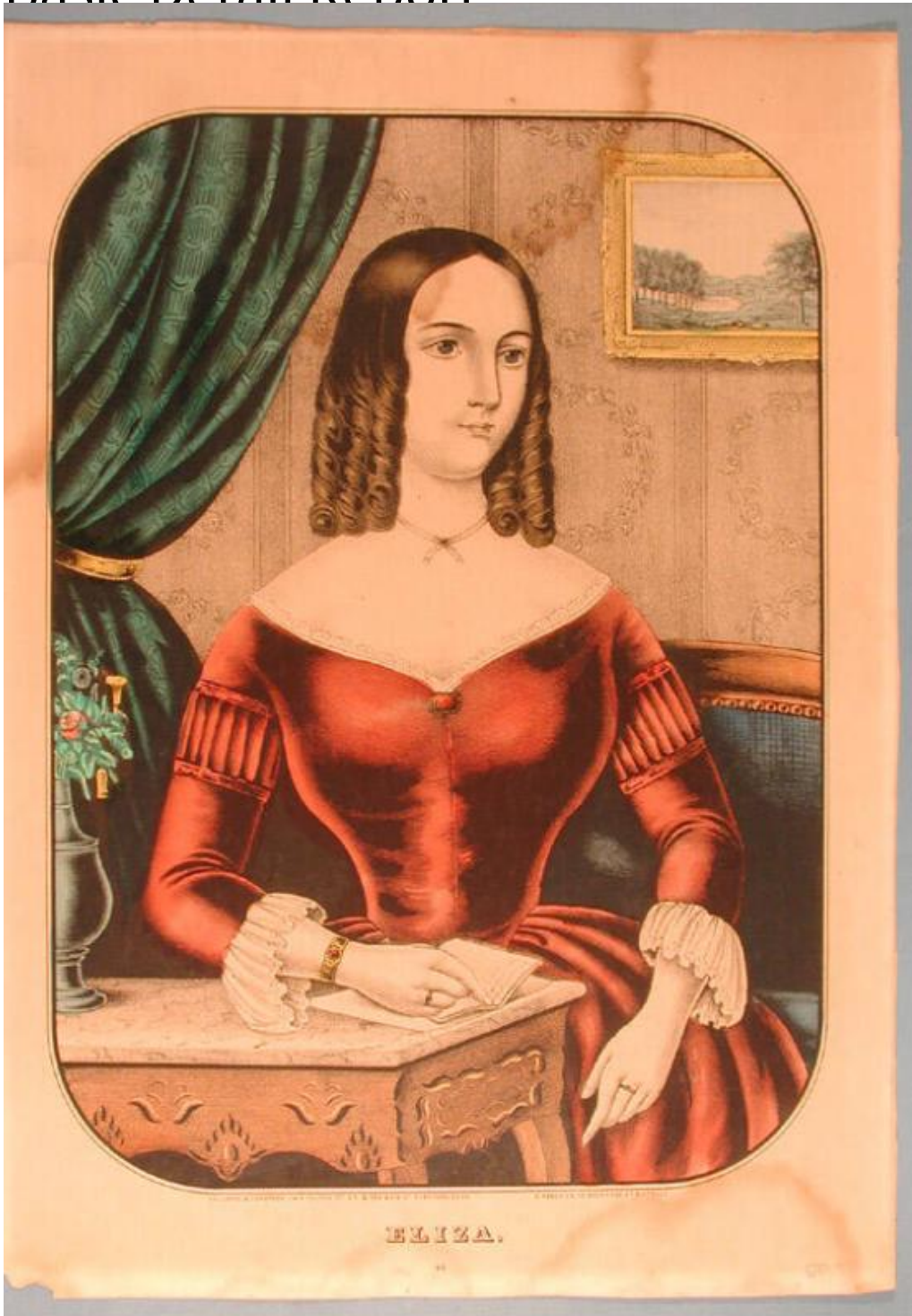


Basic Detail Report



Title Eliza.

Date 1848-1850

Primary Maker Kelloggs & Comstock

Medium Lithography; printer's ink and watercolor on wove paper

Basic Detail Report

Description Three-quarter length portrait of a young woman sitting on a sofa.

She is wearing a dress with a fitted bodice trimmed with lace. Her jewelery includes a small brooch, a bracelet, and two rings. A narrow ribbon is tied around her neck. Her right hand rests on a small open book on a marble topped table. A vase of flowers is at the far left. Her left finger points downwards. Patterned wallpaper and a framed landscape are on the wall. Drapery is at the left.

Dimensions Primary Dimensions (image height x width): 11 7/8 x 8 9/16in. (30.2 x 21.7cm) Sheet (height x width): 13 15/16 x 9 7/8in. (35.4 x 25.1cm)