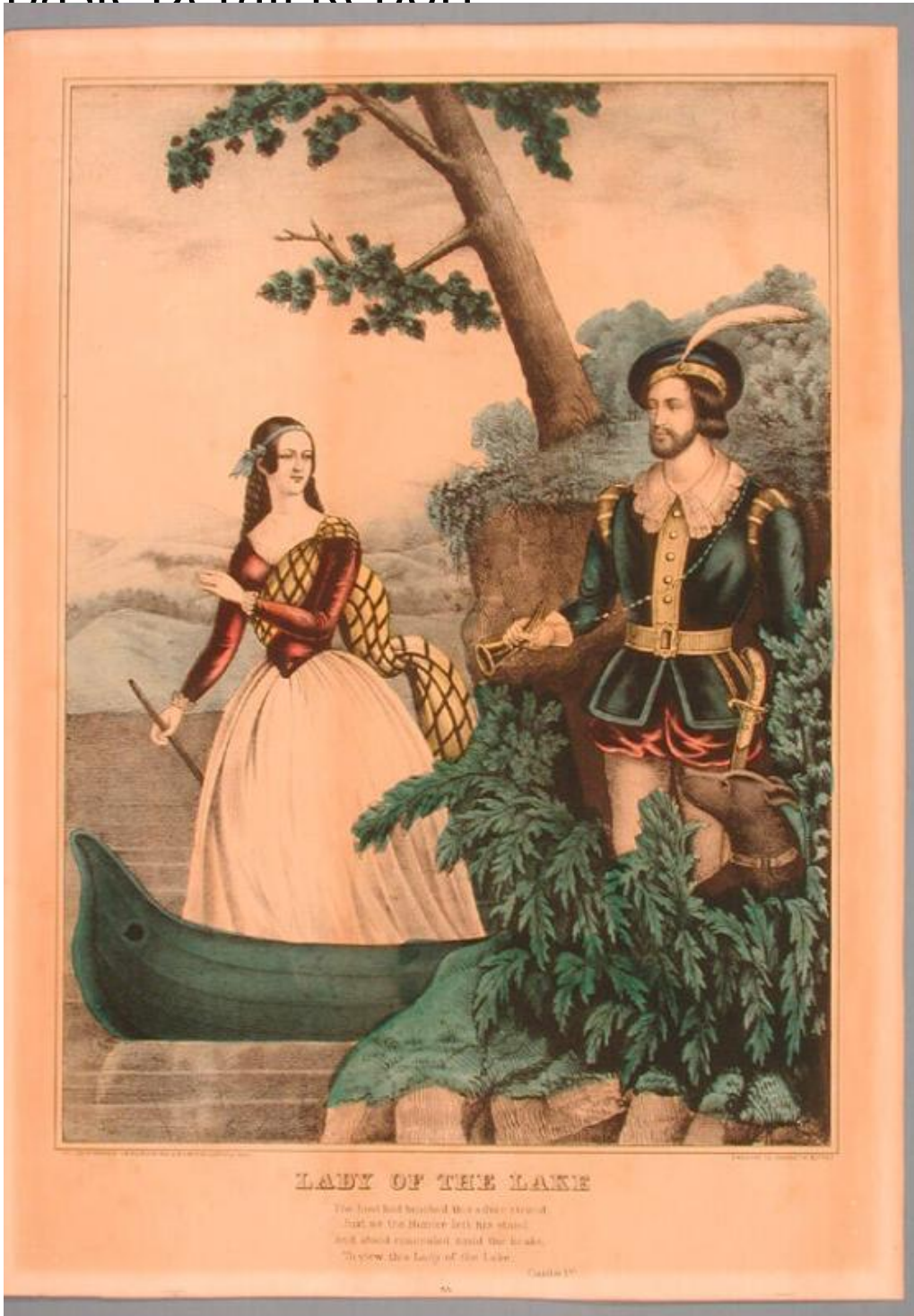


# Basic Detail Report



**Title** Lady of the Lake

**Date** 1848-1850

**Primary Maker** Kelloggs & Comstock

**Medium** Lithography; printer's ink and watercolor on wove paper

# Basic Detail Report

Description A woman stands in a boat on a lake. She wears a dress with a tight

bodice with lace cuffs and a long plaid sash fastened at the shoulder with a pin.

A ribbon tied in a bow is in her hair. She holds a pole or oar in her right hand. On

the right, a man wearing a doublet trimmed with lace, a belt, hose, gloves, and a

cap with a feather stands among dense brush. A sword in a scabbard is at his

side, and he holds a small horn in his right hand. The horn is attached to a chain.

He has a beard and mustache. A dog with a collar sits beside him. A tree is on a

cliff in the right background. Hills are visible beyond the lake in the left

background.

Dimensions Primary Dimensions (image height x width): 11 7/8 x 8 5/8in. (30.2 x

21.9cm) Sheet (height x width): 14 x 10in. (35.6 x 25.4cm)