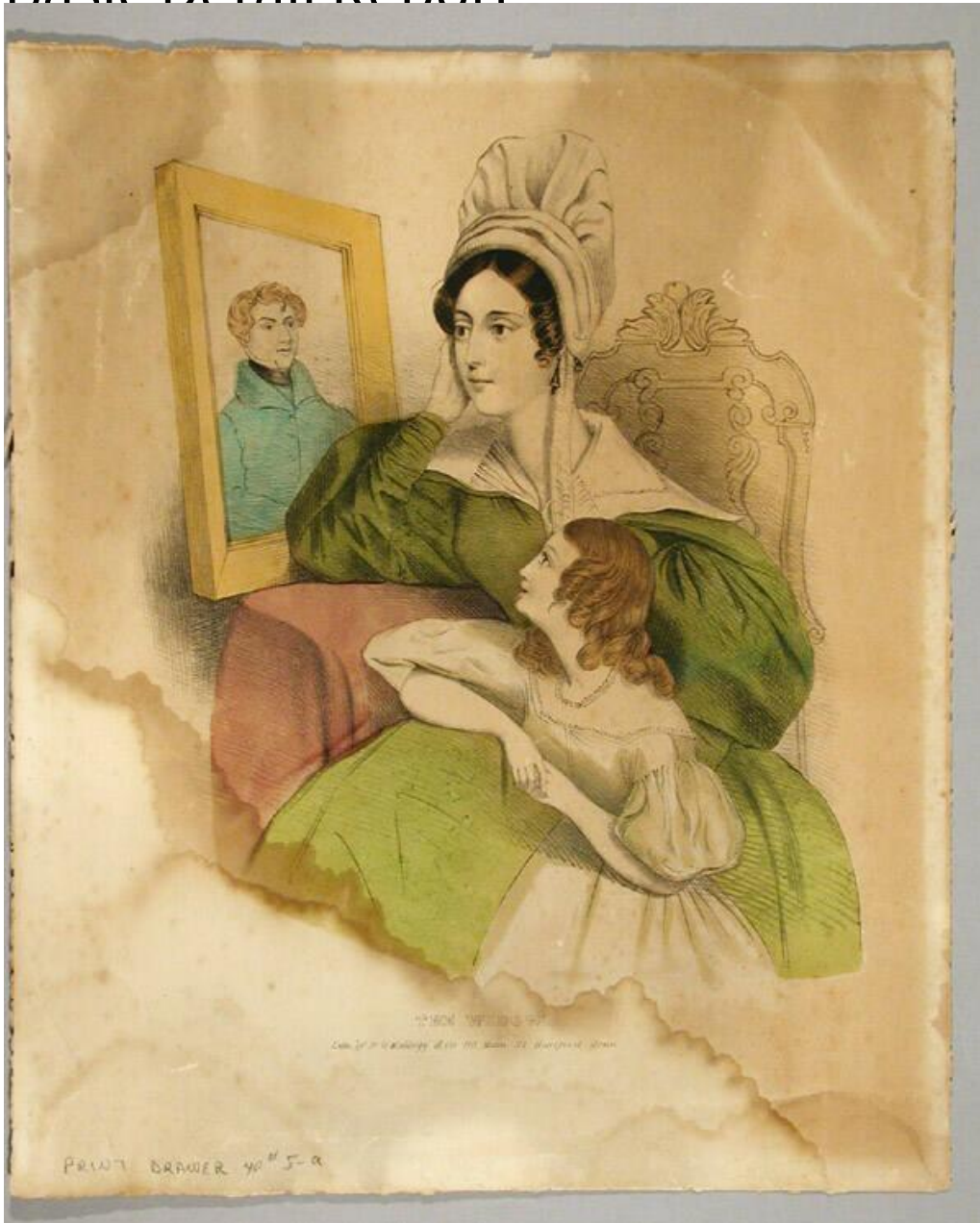


Basic Detail Report



Title The Widow.

Date 1830-1840

Primary Maker D. W. Kellogg & Co.

Medium Lithography; printer's ink and watercolor on wove paper

Description A woman sits in an elaborately carved chair. She is wearing a dress with balloon sleeves and a large collar, a cap, and earrings. She rests her head on her hand and looks at a framed portrait of a man wearing a coat and stock. A

Basic Detail Report

young girl wearing a low-cut dress and a necklace stands beside her, also

looking at the portrait.

Dimensions Primary Dimensions (image height x width): 8 3/8 x 7in. (21.3 x 17.8

cm) Sheet (height x width): 11 1/8 x 9 3/16in. (28.3 x 23.3cm)