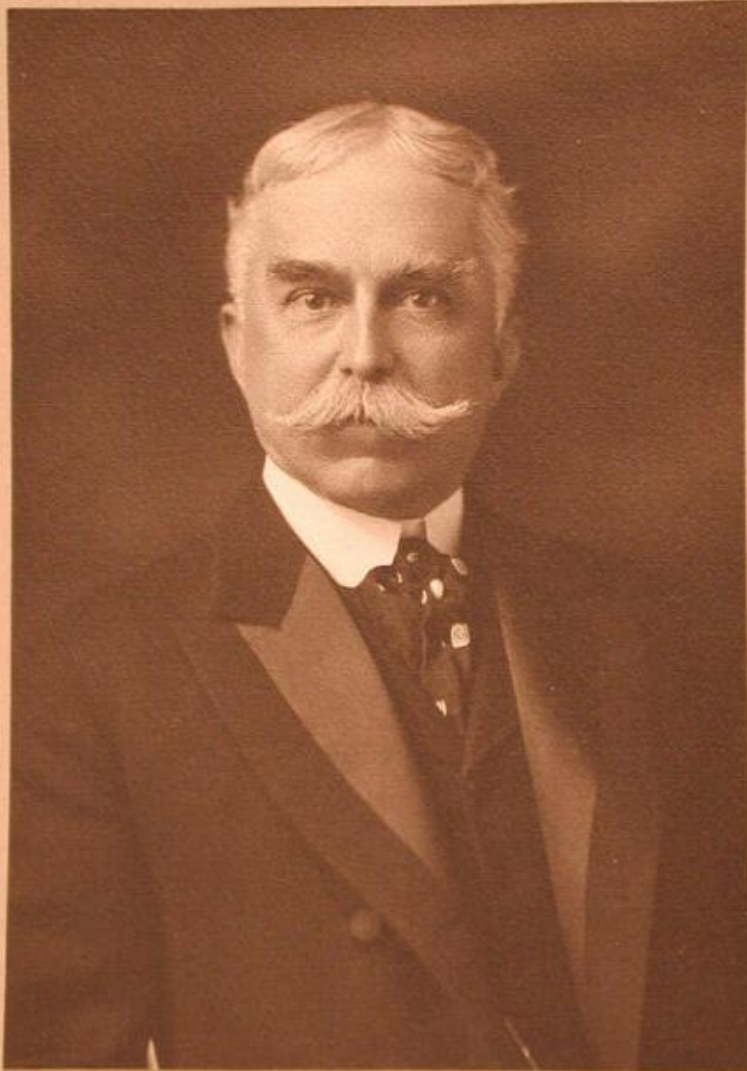


# Basic Detail Report



**Title Henry L. Hotchkiss**

Date about 1915

Primary Maker George C. Phelps

Medium Photography; carbon print on paper

# Basic Detail Report

Description Bust length studio portrait of an elderly man wearing a coat, vest, patterned necktie, and a celluloid collar. He has a mustache.

Dimensions Primary Dimensions (image height x width): 5 1/2 x 3 1/16in. (14 x 7.8 cm) Sheet (height x width): 5 1/2 x 3 13/16in. (14 x 9.7cm) Mount (height x width): 10 3/8 x 7in. (26.4 x 17.8cm) Folder (height x width): 10 15/16 x 14 5/8in. (27.8 x 37.1cm)