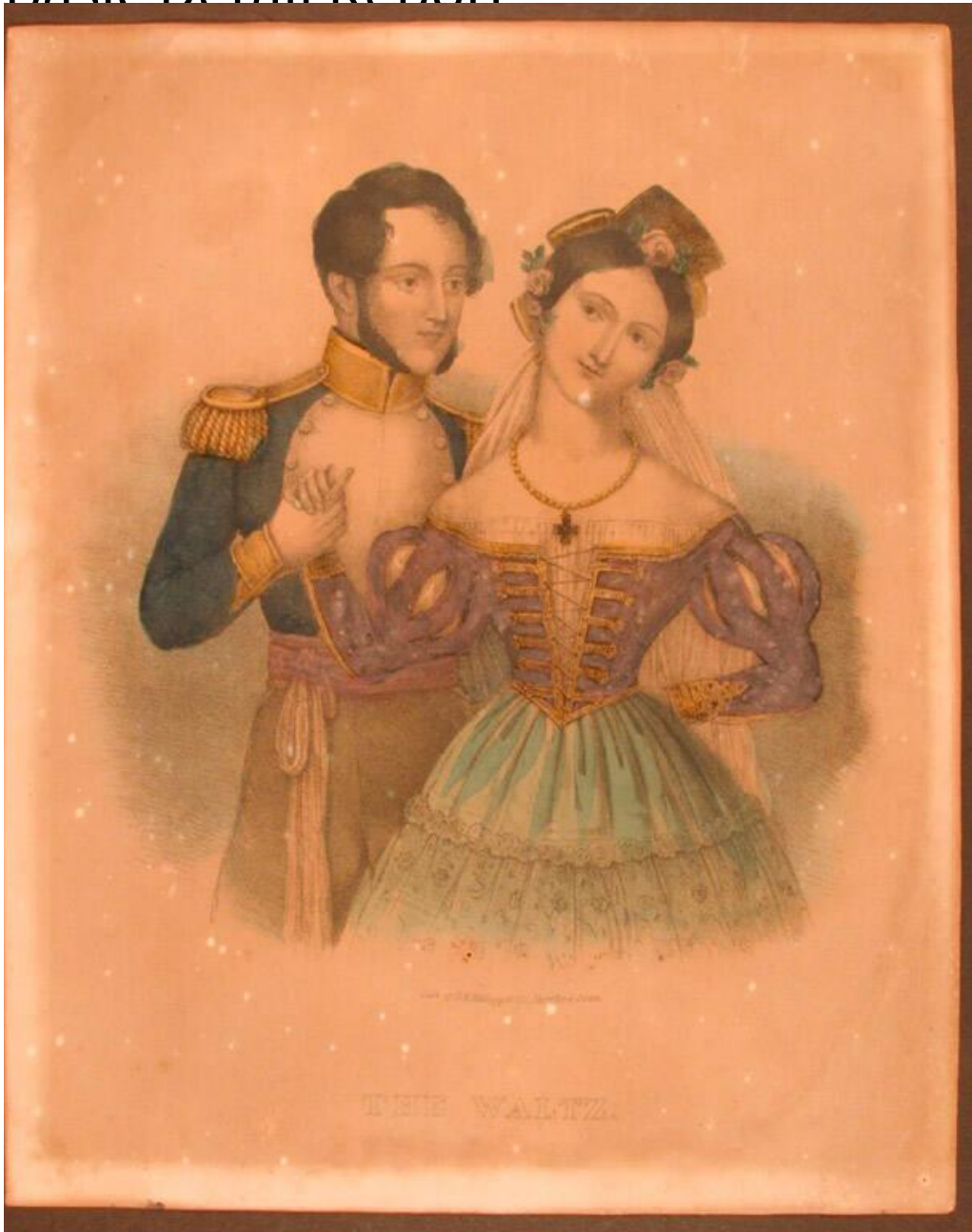


Basic Detail Report



Title The Waltz.

Date 1830-1840

Primary Maker D. W. Kellogg & Co.

Medium Lithography; printer's ink and watercolor on wove paper

Description Three-quarter-length view of a young man and a young woman. He holds her right hand in his right hand. Their left hands are clasped behind her back. He wears a military uniform with epaulettes and a sash. He has sideburns.

Basic Detail Report

She wears a dress with a laced bodice and slashed sleeves, trimmed with lace.

Her jewelry includes earrings and a necklace with a cross. Her headpiece

includes flowers, probably roses, and a veil.

Dimensions Primary Dimensions (image height x width): 6 5/8 x 6 1/2in. (16.8 x

16.5cm) Sheet (height x width): 10 x 7 15/16in. (25.4 x 20.2cm)