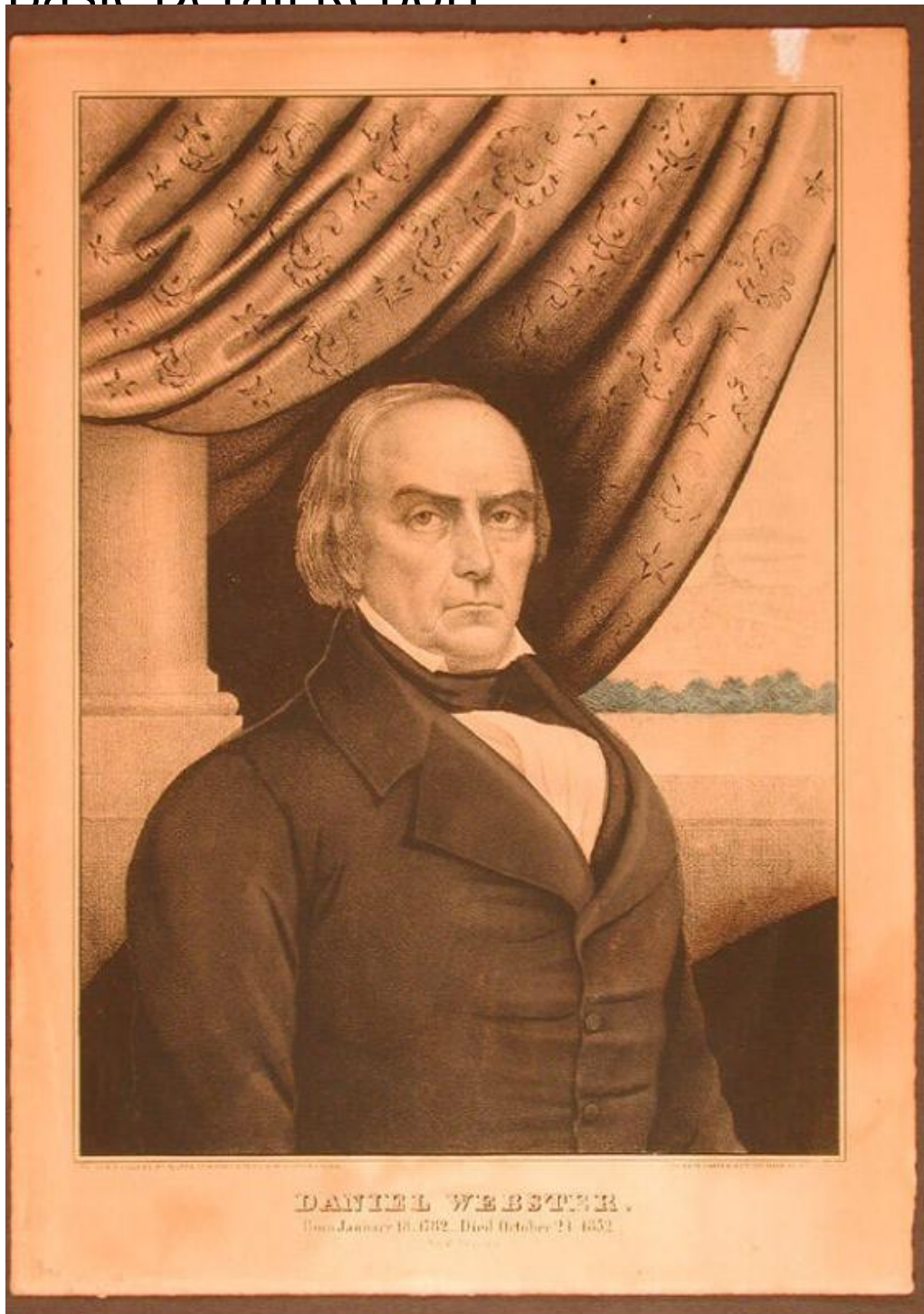


Basic Detail Report



Title Daniel Webster.

Date 1852-1853

Primary Maker Elijah Chapman Kellogg

Medium Lithography; printer's ink and watercolor on wove paper

Basic Detail Report

Description Half-length portrait of a man wearing a coat, shirt, and tie. He stands in front of a low wall supporting a column. Drapery decorated with paisley and star motifs are above his head. A large building with a dome, possibly the United States Capitol, is visible in the distance.

Dimensions Primary Dimensions (image height x width): 11 7/8 x 8 1/2in. (30.2 x 21.6cm) Sheet (height x width): 14 x 10in. (35.6 x 25.4cm)