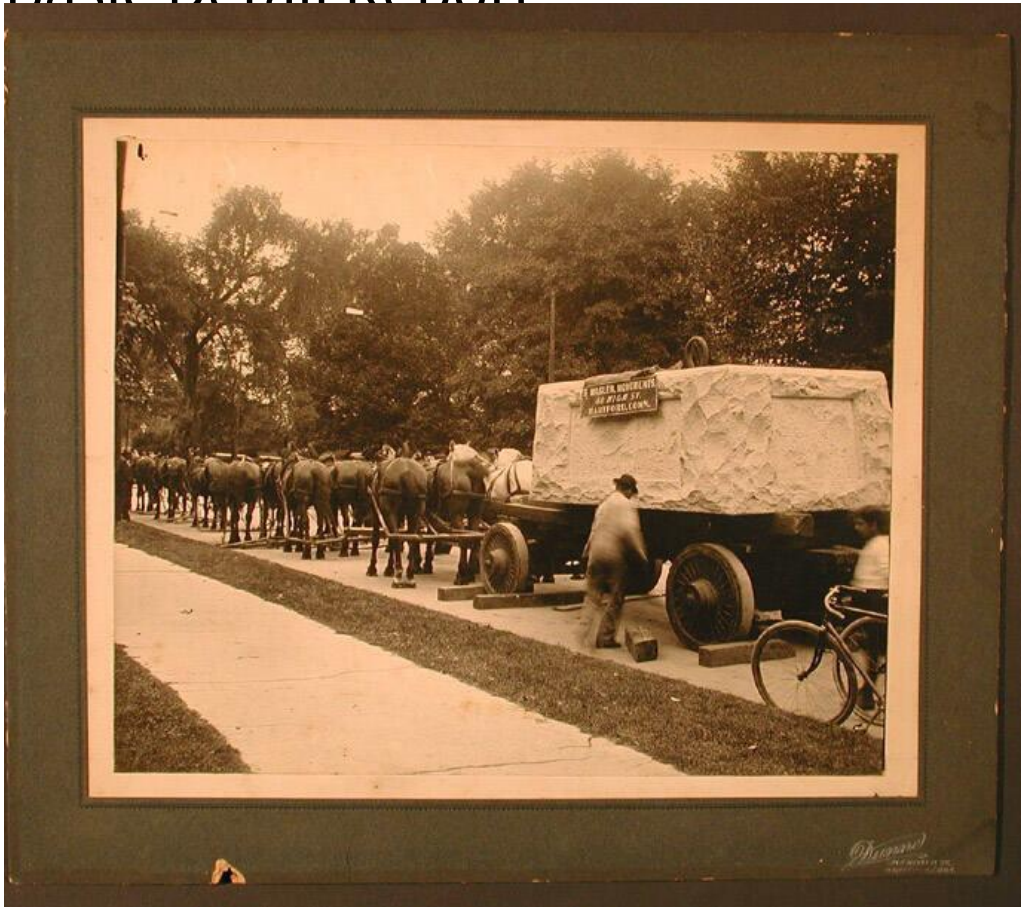


# Basic Detail Report



## Title Base of Memorial in Front of the State Capitol, Hartford

Date 1902-1906

Primary Maker J. Fred Dunne

Medium Photography; gelatin silver print on wove paper on cardboard

Description A large block of cut stone, probably granite, is supported on wooden beams on a wagon drawn by ten pairs of horses. A sign on the stone reads: "S. MASLEN. MONUMENTS. / 40 HIGH ST. / HARTFORD, CONN." Blocks of wood are used to prevent the wheels from rolling. A man who appears to be African-American stands at the far left. A man wearing work clothes, including overalls,

# Basic Detail Report

is near the wagon. He and another man near a bicycle at the far right are both blurred from movement. Strips of grassy lawn and a paved sidewalk are in the foreground. Trees are in the background.

Dimensions Primary Dimensions (image height x width): 7 13/16 x 9 9/16in. (19.8 x 24.3cm) Sheet (height x width): 10 1/2 x 12 3/8in. (26.7 x 31.4cm)