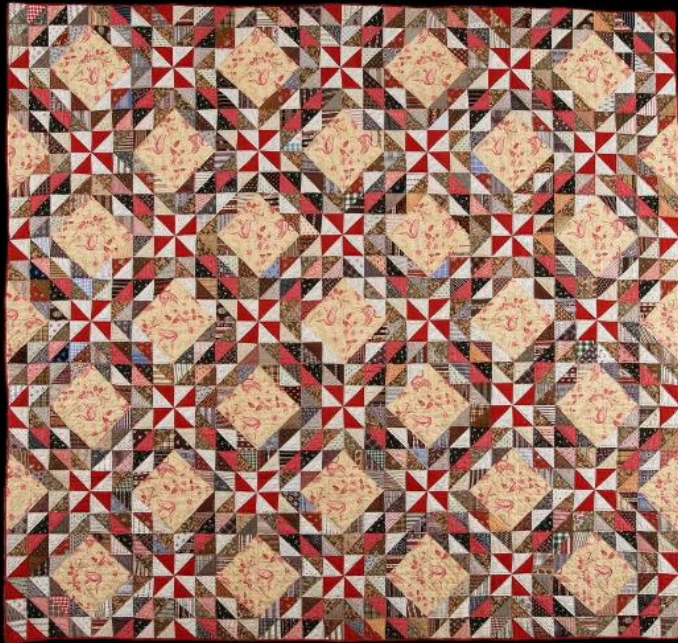


Basic Detail Report



Title Pieced Quilt

Date 1880s

Primary Maker Susan Melissa Lewis

Medium Hand-stitched plain-woven cotton, or calico

Description Pieced quilt in a Windmill pattern variation. The quilt consists of a hand-stitched pieced top of plain-woven cotton, or calico, batting, and a calico backing; the three layers are joined with a hand-stitched quilting pattern. Each block consists of a large unpieced square of cream-colored cotton with a red printed design of a crane and flowers. The block is set on point and surrounded by two rows of sashing pieced together from opposing triangles. The sashing intersects to create a red and white windmill pattern. The quilting pattern consists of a grid in the unpieced blocks and geometric quilting that follows the shape of the pieced triangles in the sashing. The backing is pieced in alternating panels of two different calicos; one is blue with red and green printed flowers

Basic Detail Report

the other is white with cranes and flowers printed in black and blue. Each side of

the quilt is bound in straight grain red fabric binding. Condition: The top and

backing have scattered light brown spots and stains. The binding is frayed in a

small area at one side, revealing the quilt batting.

Dimensions Primary Dimensions (length x width): 89 3/4 x 89 1/2in. (228 x 227.3

cm)