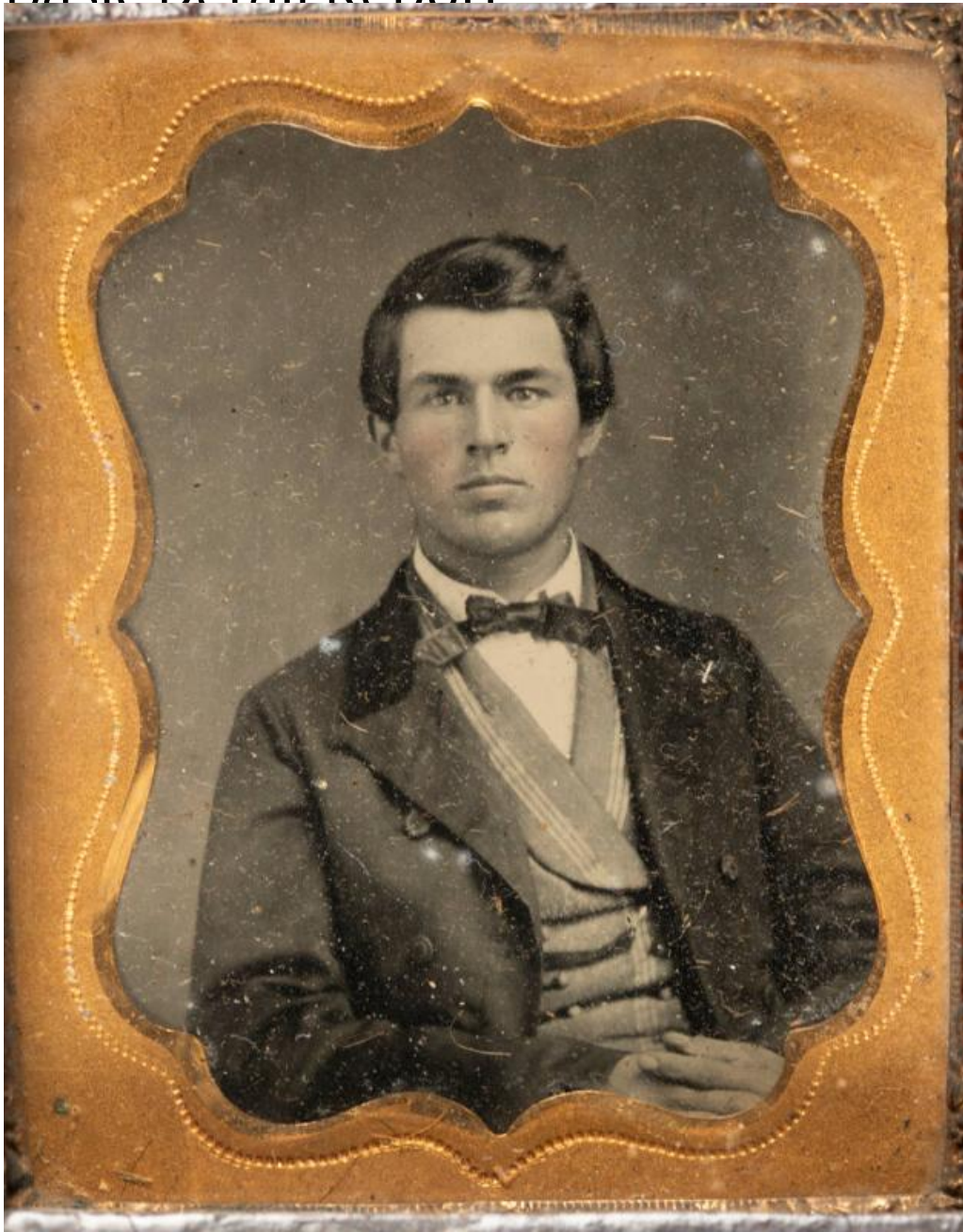


Basic Detail Report



Title Benjamin Franklin Beardsley

Date 1861-1862

Primary Maker Dr. Benjamin Franklin Beardsley

Medium Tintype; collodion on lacquered iron in brass mat package and wooden frame

Basic Detail Report

Description Ninth-plate tintype in wooden frame of Benjamin Franklin Beardsley

at the age of 20. He has on a double-breasted jacket with wide lapels, worn open

over a double-breasted, striped waistcoat, white shirt, and narrow bow tie. His

dark hair is cut just above his ears and is parted on the side. His cheeks are

tinted pink.

Dimensions Plate (height x width): $2\frac{1}{2} \times 2\frac{1}{8}$ in. (6.4×5.4 cm) Frame (height x

width x depth): $5\frac{1}{8} \times 4\frac{3}{4} \times 1$ in. ($13 \times 12.1 \times 2.5$ cm)