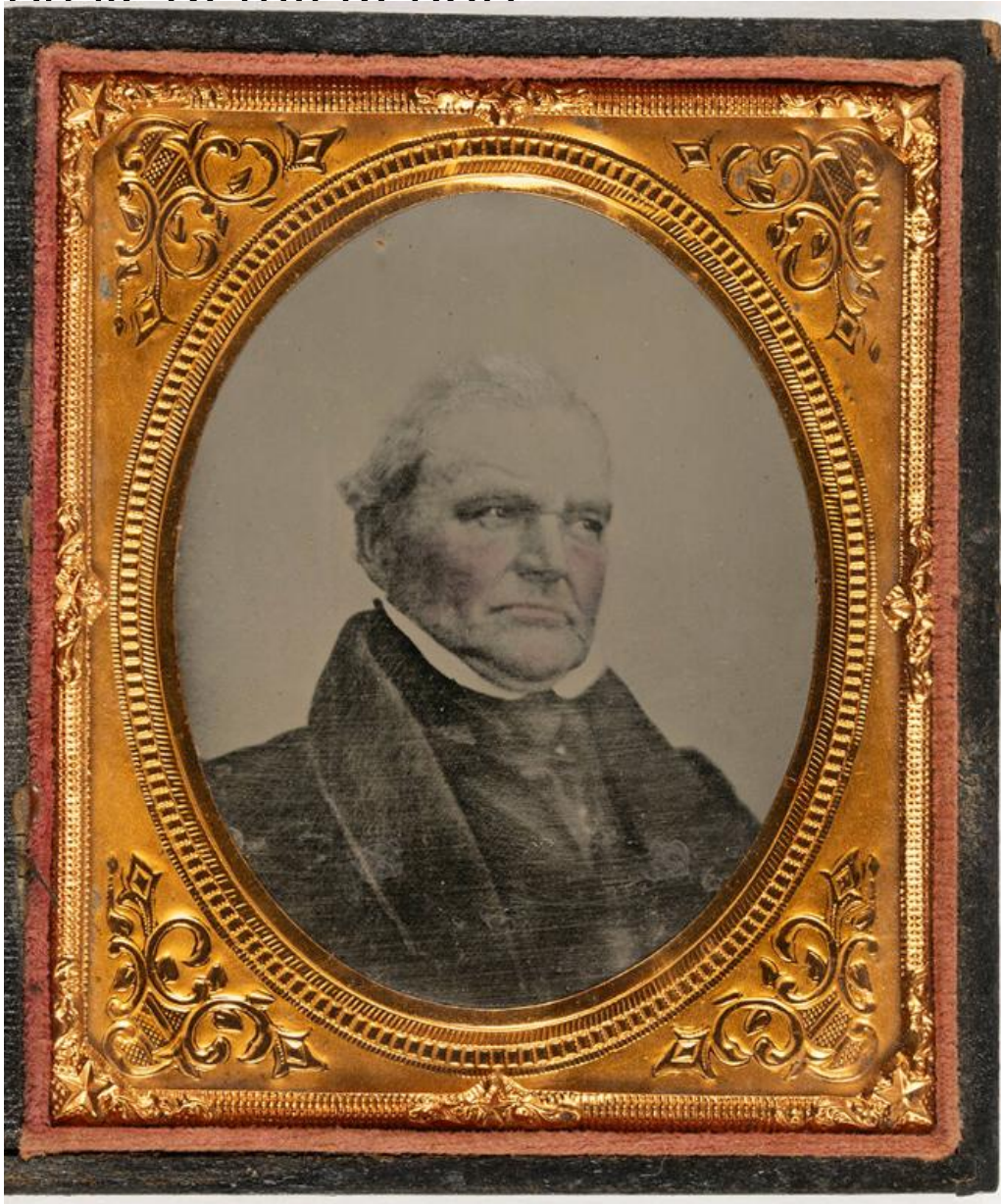


Basic Detail Report



Title Amos Beecher

Date about 1860

Primary Maker Amos Beecher

Medium Tintype; collodion on lacquered iron in brass mat package in tooled

leather-covered case; red velvet pad on left side of open case

Description Sixth plate tintype of Amos Beecher, photographer unknown.

Beecher is probably in his sixties in this image. He has thinning gray or white hair

Basic Detail Report

that has been retouched by the photographer. He is wearing a large jacket with substantial lapels, a white collar, and a tie.

Dimensions Plate (height x width): $3 \frac{1}{4} \times 2 \frac{3}{4}$ in. (8.3×7 cm) Other (case

height x width x depth): $3 \frac{3}{4} \times 3 \frac{1}{4} \times \frac{3}{4}$ in. ($9.5 \times 8.3 \times 1.9$ cm)