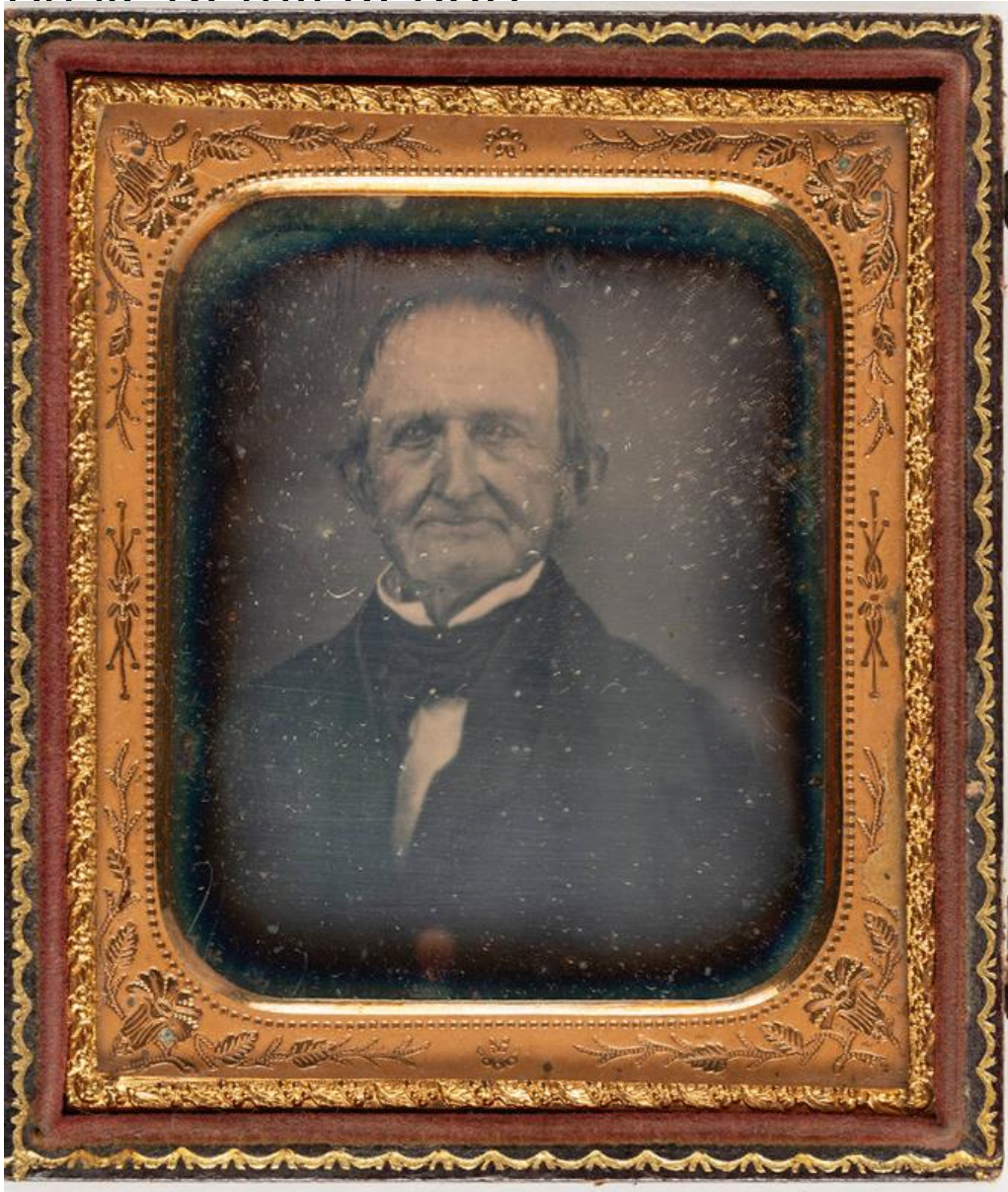


# Basic Detail Report



## Title Samuel Bicknell

Date 1845-1856

Primary Maker Samuel Bicknell

Medium Daguerreotype; silver-plated copper plate in brass mat package in wooden case covered in tooled leather; blue velvet pad in left side of open case

Description Sixth plate daguerreotype of Samuel Bicknell. He is pictured in older age. He is wearing a dark jacket, white shirt, upturned white collar, and dark tie.

# Basic Detail Report

Dimensions Plate (height x width):  $3 \frac{1}{4} \times 2 \frac{3}{4}$ in. ( $8.3 \times 7$ cm) Other (height x

width x depth):  $3 \frac{3}{4} \times 3 \frac{1}{4} \times \frac{1}{2}$ in. ( $9.5 \times 8.3 \times 1.3$ cm)