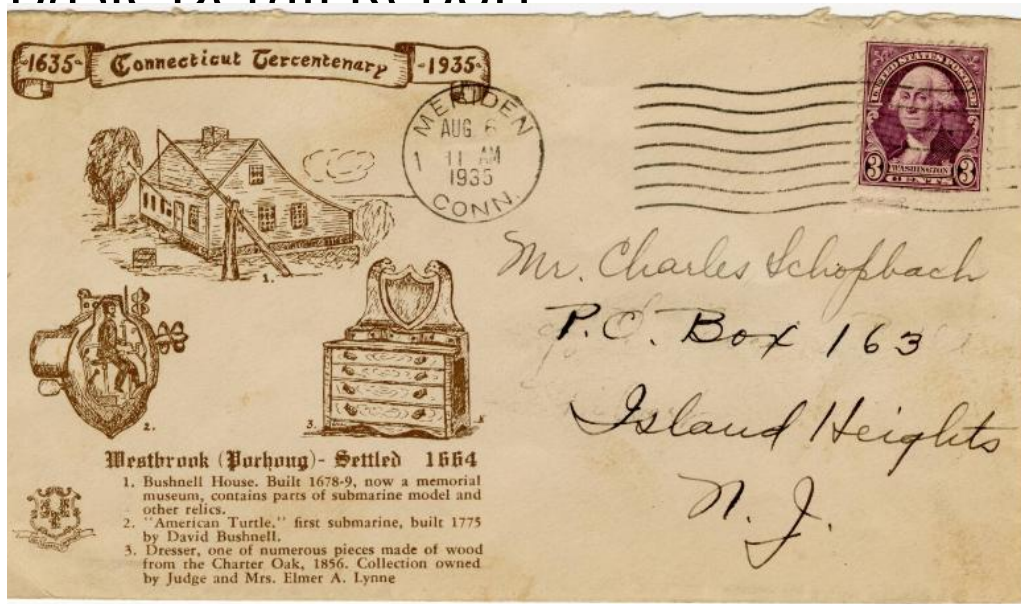


Basic Detail Report



Title Envelope

Date 1935

Medium Paper, printed ink

Description Envelope/cover with imagery advertising the Connecticut

Tercentenary, 1635-1935. The featured images related to Westbrook include the Bushnell House, Turtle submarine, and a dresser made from the Charter Oak.

The envelope is addressed to Charles Schopbach of Island Heights, New Jersey and was mailed on August 6, 1935.

Dimensions Primary Dimensions (overall height x width): $3 \frac{5}{8} \times 6 \frac{1}{2}$ in. (9.2 × 16.5cm)