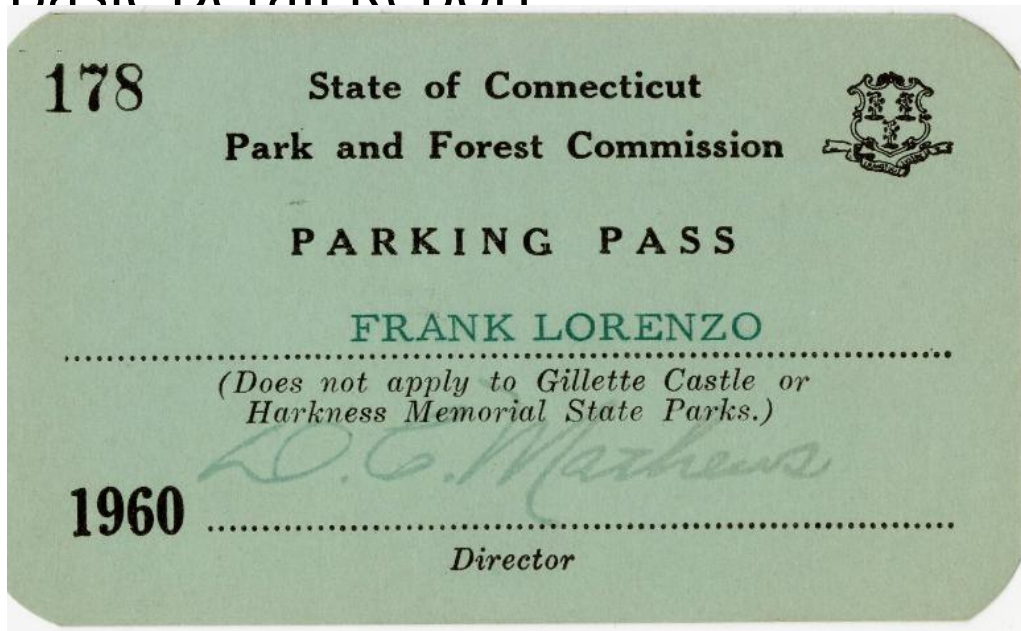


Basic Detail Report



Title Parking Pass: State of Connecticut Park and Forest Commission,

1960

Date 1960

Primary Maker Frank Lorenzo

Medium cardstock, printed ink

Description State of Connecticut Park and Forest Commission parking pass

issued to Frank Lorenzo in 1960. It has a green background with black text. The front reads, "178 / State of Connecticut / Park and Forest Commission / PARKING PASS / FRANK LORENZO / (Does not apply to Gillette Castle or / Harkness Memorial State Parks.) / 1960 / [signature of] D. C. Mathews / Director." The back reads, "This permit entitles the person whose signature / appears below to parking privileges only for any / one car in any State Park area administered by this / Commission where a parking charge is normally / assessed. This permit is non-transferable and may / be rescinded for violation. / Signature."

Basic Detail Report

Dimensions Primary Dimensions (overall height x width): $2\frac{1}{4} \times 3\frac{7}{8}$ in. (5.7×9.8 cm)