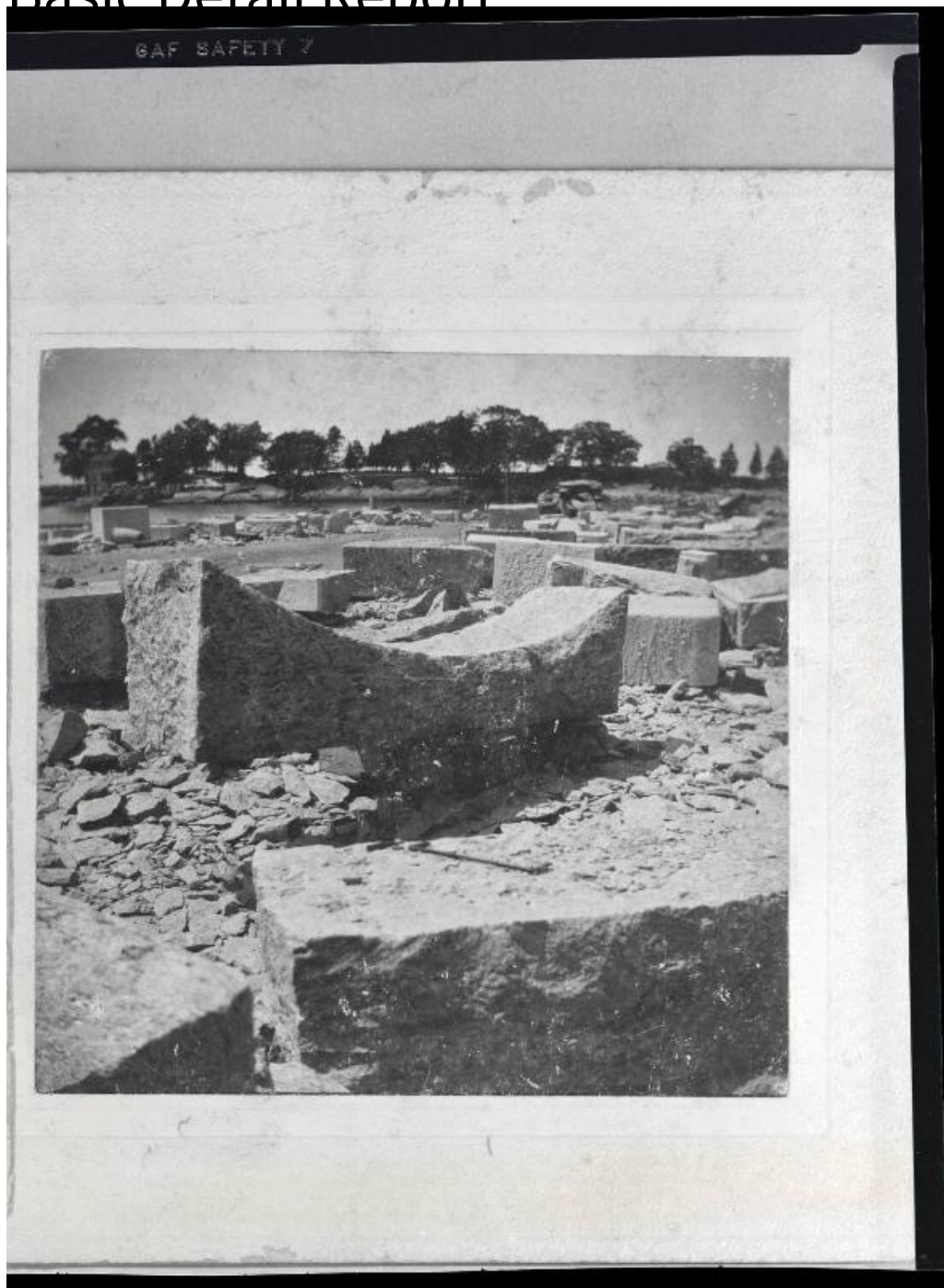


Basic Detail Report



Title Cutting Yard looking toward Narrows Island

Date 1900-1918

Medium Photography; GAF/Ansco safety nitrate negatives

Description Black and white photographic negative, view of the John Beattie

Granite Quarry cutting yard looking across to Narrows Island. Large granite

Basic Detail Report

blocks showing tool marks sit on the ground surrounded by chipped off stone,
view of Narrows Island, Guilford, Connecticut in background. This negative is a
20th century photograph of a 19th century photograph.

Dimensions Primary Dimensions (overall height x width): $5 \frac{1}{16} \times 3 \frac{7}{8}$ in. (12.9
 $\times 9.8$ cm)