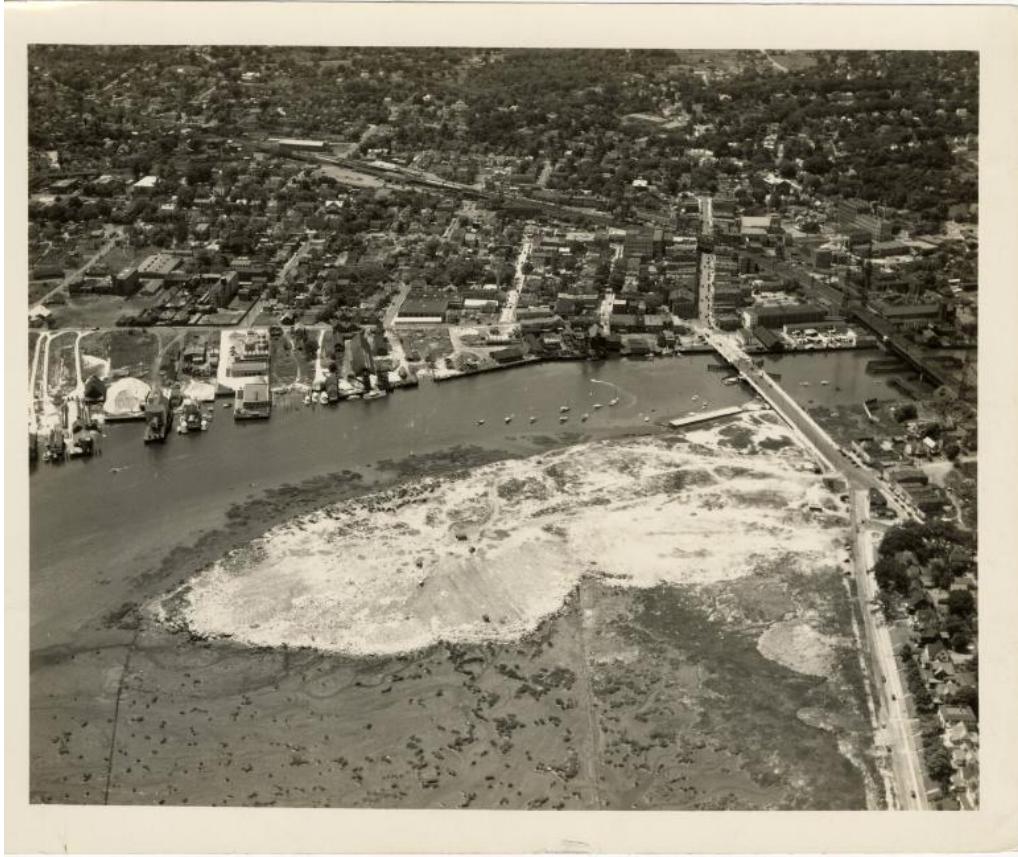


# Basic Detail Report



## Title Aerial View of Norwalk

Date c. 1920-1940

Primary Maker Underwood & Underwood

Medium Photography

Description Black and white photograph of an aerial view of Norwalk, Connecticut. The Norwalk River Bridge and Norwalk River Railroad Bridge are visible on the right. Photographed by Underwood-Stratton, a Division of Underwood & Underwood.

Dimensions Primary Dimensions (overall height x width): 7 3/8 × 9in. (18.7 × 22.9cm)