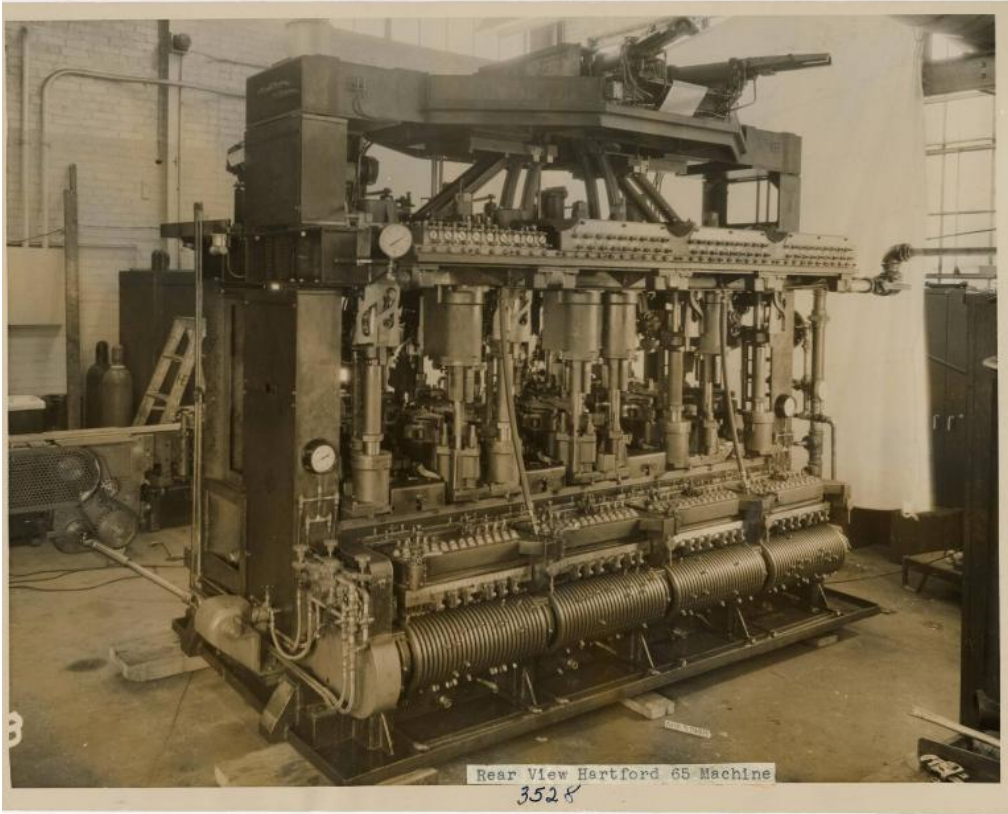


Basic Detail Report



Title Rear View of Hartford 65 Machine

Date 5 April 1948

Primary Maker Hartford-Empire Co.

Medium Photography; gelatin silver print on paper

Description Black and white photograph of the rear view of a Hartford 65 Machine. Probably photographed by the Hartford-Empire Company Advertising Department, 5 April 1948.

Dimensions Primary Dimensions (overall height x width): 8 × 10in. (20.3 × 25.4 cm)