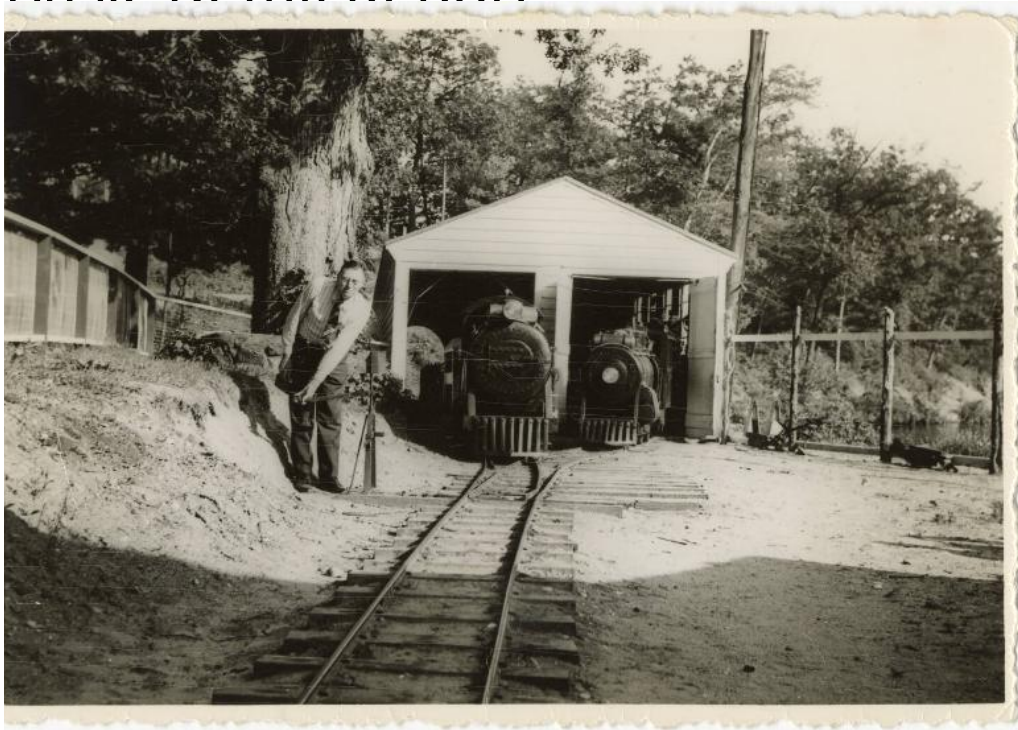


# Basic Detail Report



**Title** Gillette Railroad Switchman and Engine Terminal, Lake

**Compounce, Bristol**

**Date** 1944

**Primary Maker** Ernest N. Maine

**Medium** Photography; gelatin silver on paper

**Description** Black and white photograph of the Gillette Railroad Switchman and Engine Terminal at Lake Compounce in Bristol, Connecticut. The photograph depicts the engine terminal for the Gillette Railroad attraction, photographed looking at the terminal from down the rail tracks. The switchman, Ernest N. Maine, stands to the left side of the tracks. In the background, both trains are parked in the terminal, with the forest behind them.

**Dimensions Primary Dimensions (height x width):** 2 11/16 × 4in. (6.9 × 10.2cm)

**Sheet (height x width):** 2 7/8 × 4 3/16in. (7.3 × 10.6cm)