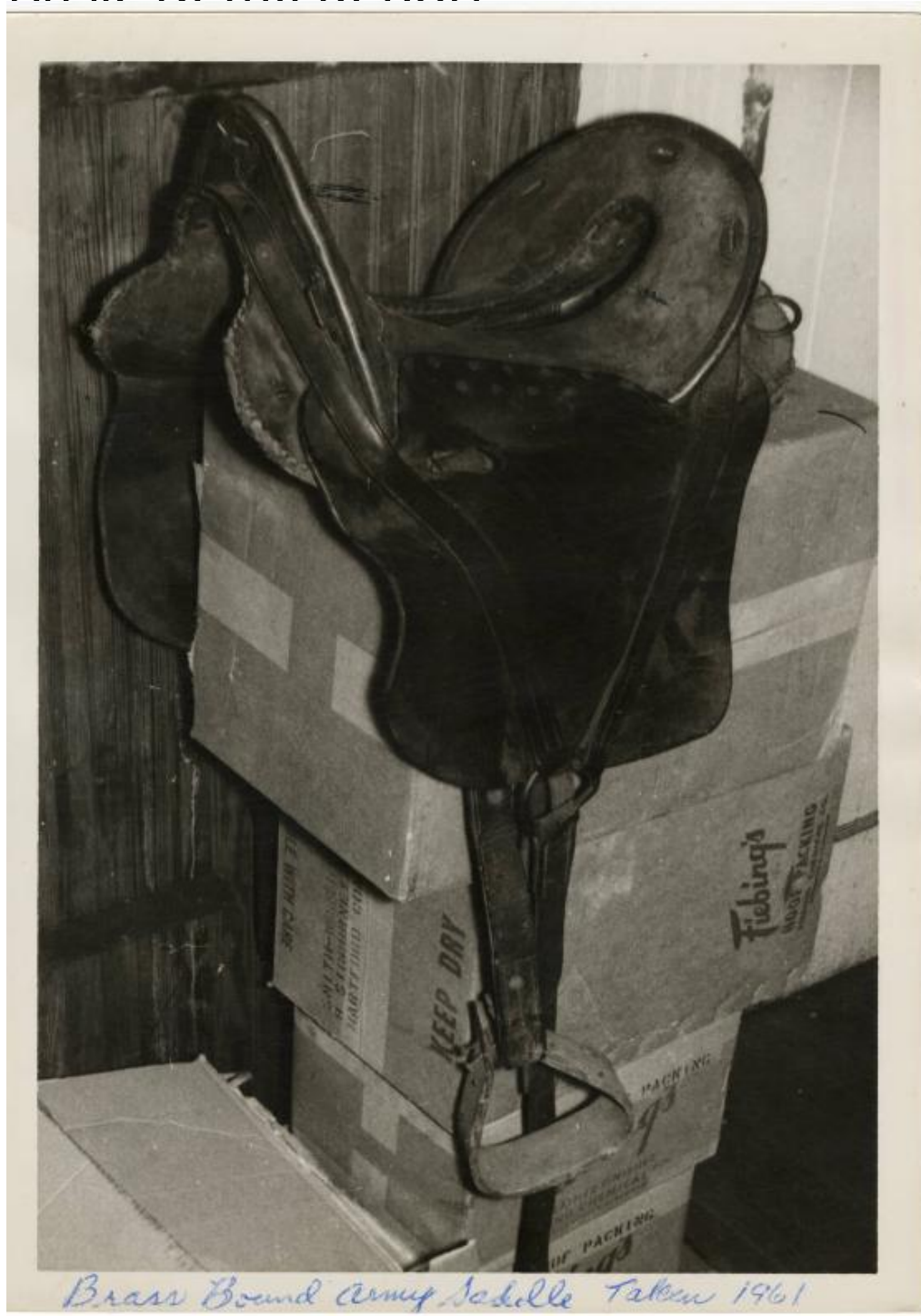


# Basic Detail Report



**Title Brass Bound Army Saddle**

Date 1961

Primary Maker Smith-Worthington Saddlery Company

Medium black and white photographic print

# Basic Detail Report

Description Black and white photograph of a Brass Bound Army Saddle. The saddle is atop a stack of cardboard boxes. There is a handwritten label in blue pen in the lower margin reading, “Brass Bound Army Saddle Taken 1961.”

Dimensions Primary Dimensions: 7 × 5in. (17.8 × 12.7cm)