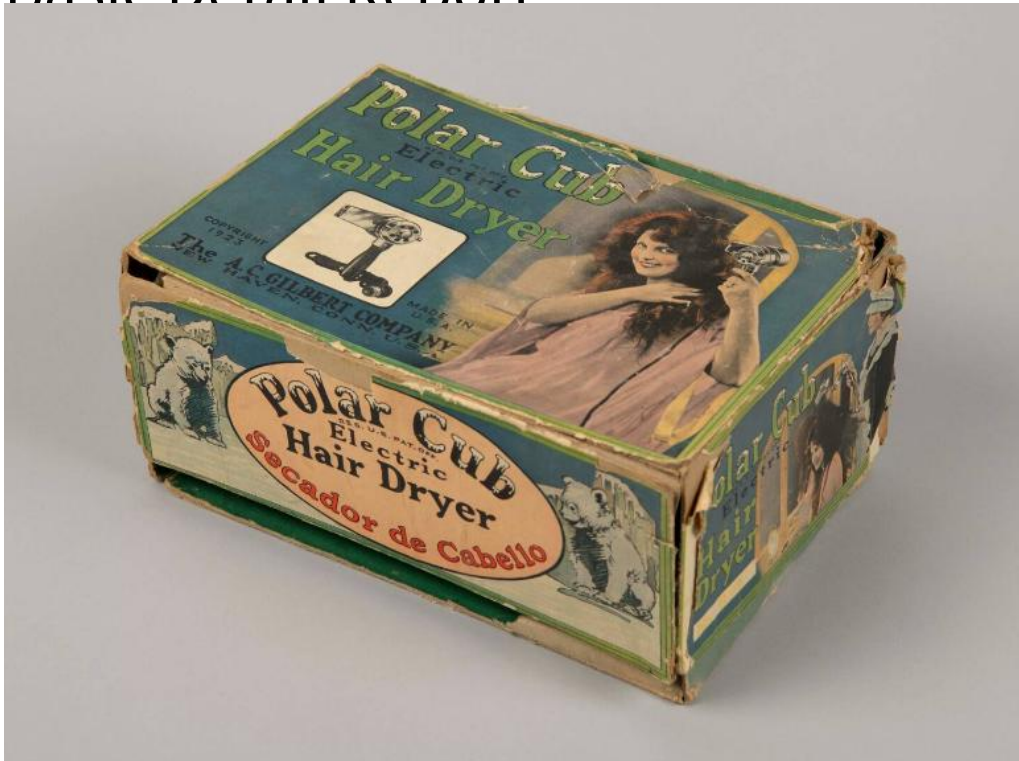


# Basic Detail Report



## Title Hair Dryer

Date c. 1923

Primary Maker A. C. Gilbert Co.

Medium (a) cardboard, printed paper (b) tin, aluminum, wood, rubber, plastic, asbestos

Description A Polar Cub Electric Hair Dryer in original box made by A. C. Gilbert

Company of New Haven, Connecticut, c. 1923. (a) A two part box with color

images and labels on the cover. The images have colored pictures of people

using the hair dryer. The text is done in a stylized printing, especially the "Polar

Cub" section. The bottom part of the box has green paper on all sides. The box

top has a picture of a woman using the hair dryer while standing in front of a

mirror, as well as a drawing of the hair dryer. The long sides of the box have a

drawing of two polar bear cubs in the Artic. The short sides of the box have an

# Basic Detail Report

image of a barber using the hair dryer on a boys head and an image of a maid

using it on the same woman pictured on the box top. (b) Grey hair dryer with

aluminum attachments and a red wooden handle. The handle is curved and

circular. It is attached to the air intake case, which is barrel shaped. This case

has a ball on/off switch and two circular aluminum knobs. The intake case is

attached to the exhaust case, which is rounded at one end and squared at the

mouth, and has flat sides. At the mouth is an aluminum tip with an "x" grid. On

the circular end is a flower petal grid on the outside, showing the inner

mechanism and fan. A brown rubber power cord extends from within the handle

to a black plastic two-prong AC plug [this may not be the original cord since it is

different from the cord in the picture on the box].

Dimensions (a) Primary Dimensions (overall length x height x width of box):  $9 \frac{1}{2}$

$\times 5 \times 6 \frac{3}{4}$ in. ( $24.1 \times 12.7 \times 17.1$ cm) (b) Primary Dimensions (overall length x

height x width of hair dryer):  $5 \frac{1}{4} \times 7 \frac{1}{2} \times 4 \frac{1}{2}$ in. ( $13.3 \times 19.1 \times 11.4$ cm)