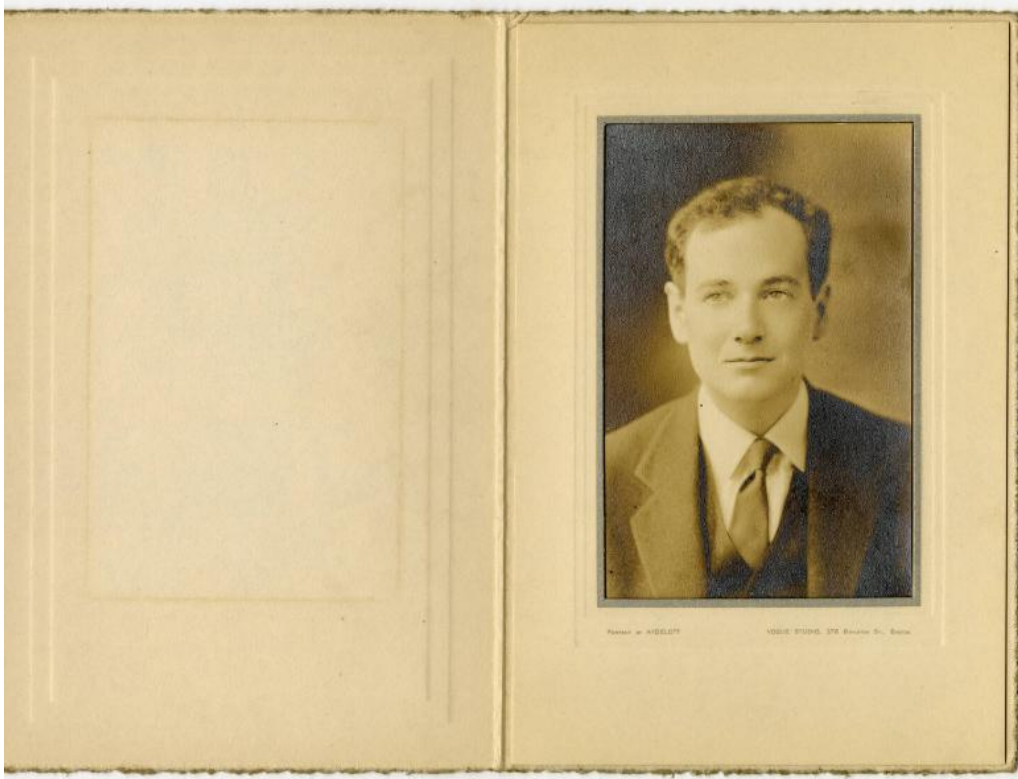


Basic Detail Report



Title Rev. Charles Goodwin

Primary Maker Rev. Charles Goodwin

Description Black and white portrait (a) photograph in a (b) bi-fold envelope of Rev. Charles Goodwin by Aydelott Vogue Studio of Boston, Massachusetts.

Goodwin is wearing a suit and tie.

Dimensions Primary Dimensions (Closed): $6 \frac{1}{4} \times \frac{1}{8} \times 9 \frac{1}{8}$ in. ($15.9 \times 0.3 \times 23.2$ cm) Primary Dimensions (Open): $12 \frac{1}{2} \times 9 \frac{1}{8}$ in. (31.8×23.2 cm)