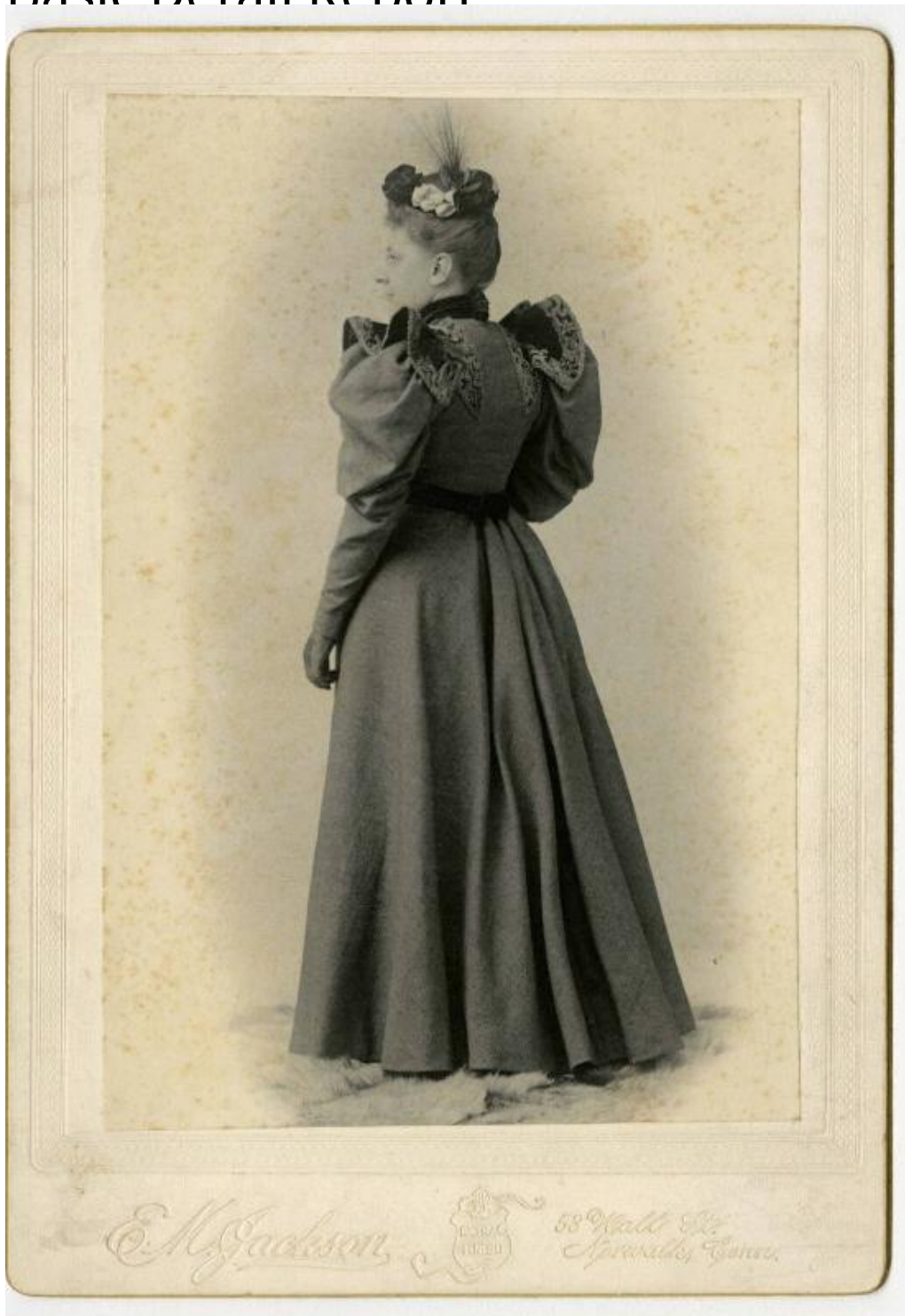


Basic Detail Renort



Title Jenny E. Buckland

Date 1895

Primary Maker Edward M. Jackson

Basic Detail Report

Description Cabinet card, black and white full-length portrait photograph of

Jenny E. Buckland by E. M. Jackson of Norwalk, Connecticut. Buckland is posed standing, the photograph was taken from behind with her face in profile.

Buckland is wearing a hat with floral and feather details and a long-sleeved full-length gown with leg-o-mutton sleeves and ruffles on the shoulder, an inscription on the reverse indicates the gown was from Paris, France.

Dimensions Primary Dimensions: $5 \times 7 \frac{1}{8}$ in. (12.7×18.1 cm)