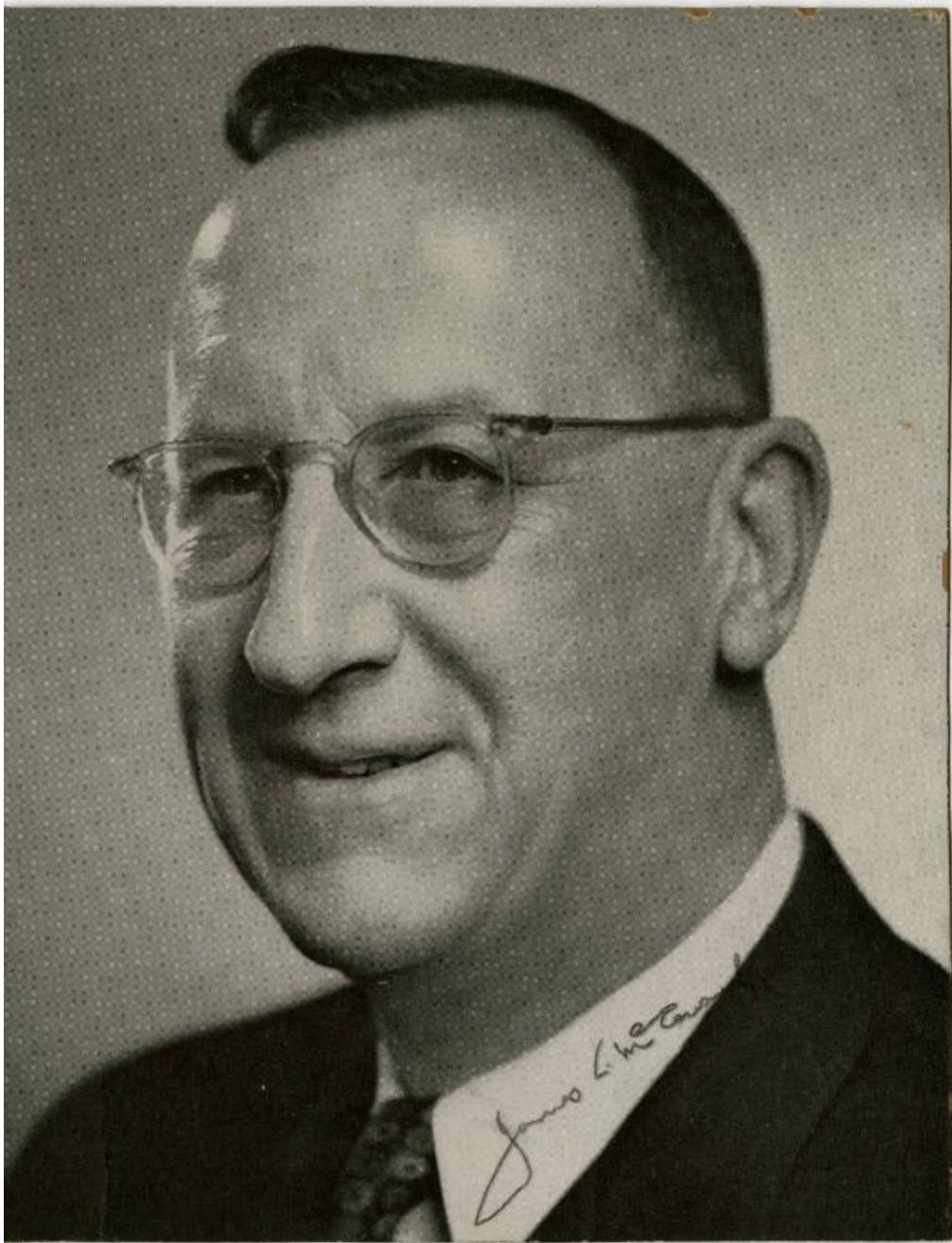


# Basic Detail Report



**Title** Gov. James L. McConaughy

**Date** 1939-1948

**Primary Maker** James L. McConaughy

**Medium** Photography; silver gelatin print on paper

**Description** Black and white portrait photograph of Gov. James L. McConaughy with his autograph.

# Basic Detail Report

Dimensions Primary Dimensions:  $7\frac{3}{4} \times 6$  in. ( $19.7 \times 15.2$  cm)